

ORA 72 7.5/11.4
35743 M

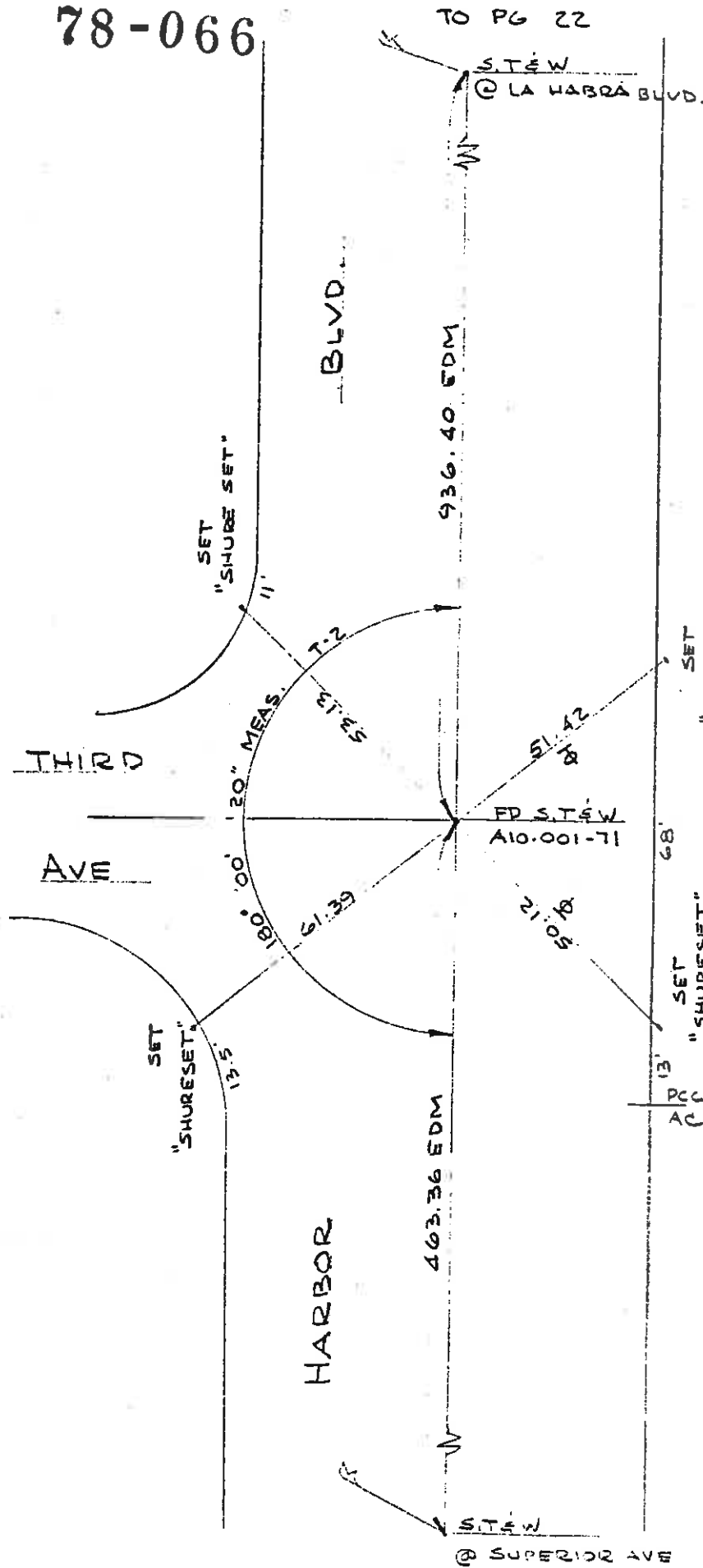
HARBOR BLVD TIES PRIOR TO
RESURFACING

9-12-78
WINTER PW

23 30

BLK 6448 MOD 59

78-066



0023



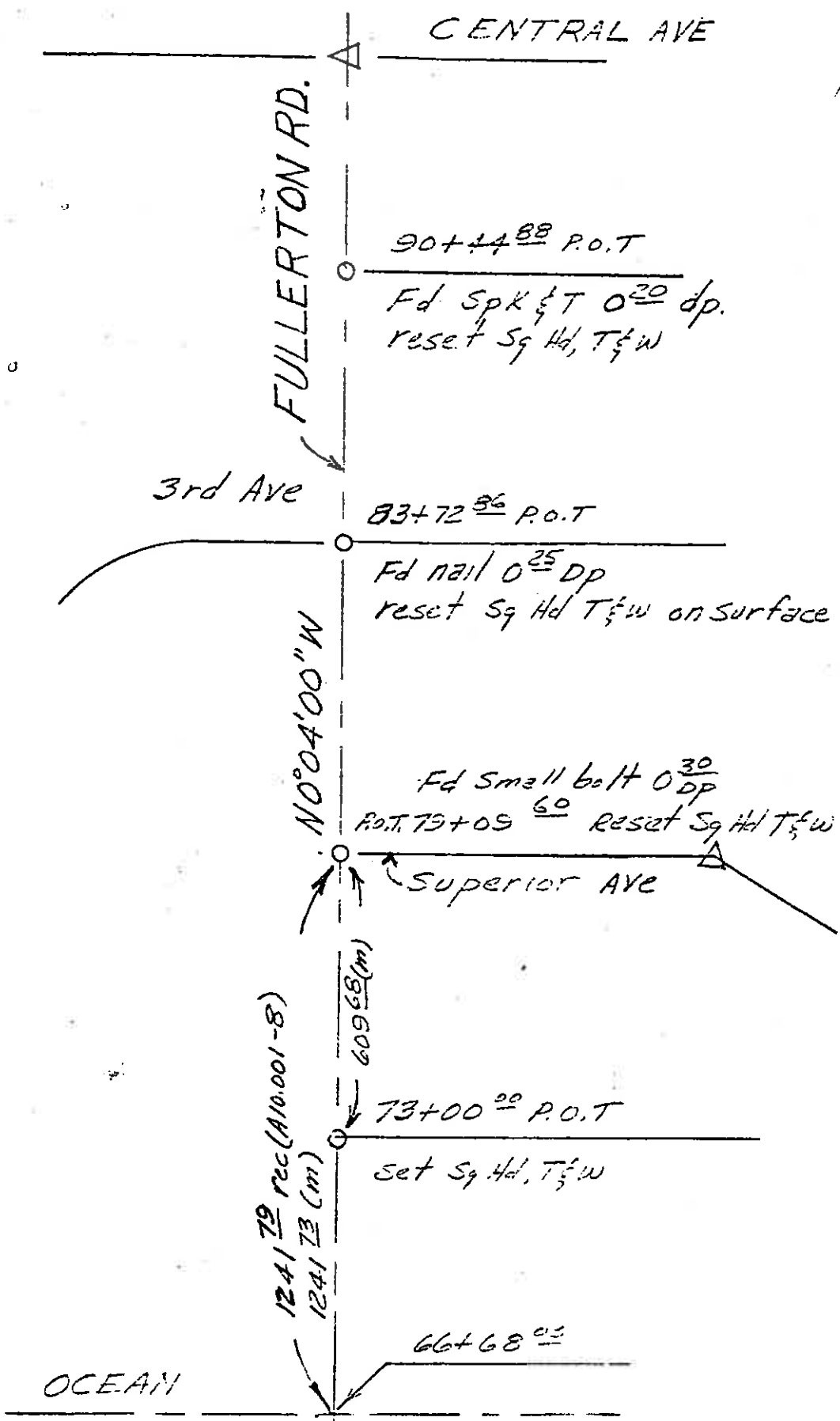
2

06440 M37,97,27,67

VIC 2010010

3
4

See pg. 5



CENTRAL AVE

90+44.88 P.O.T

Fd Spk 1/2 T 0.20 dp.
reset Sq Hd, T 1/2 W

3rd Ave

83+72.86 P.O.T

Fd nail 0.25 Dp
reset Sq Hd T 1/2 W on surface

N0°04'00"W

Fd Small bolt 0.30 Dp
P.O.T. 73+09.60 reset Sq Hd T 1/2 W

Superior AVE

609.68(m)

73+00.20 P.O.T

Set Sq Hd, T 1/2 W

1241.79 rec (A10.001-8)

1241.73 (m)

OCEAN

66+68.05

See pg. 3

VII

4/50

Survey & Plat

5