



4TH CHAMBER

A ONE-TO-ONE TRAINING CENTER & CLINIC

1211 EAST LA HABRA BLVD, SUITE "A", LA HABRA, CA 90631

4TH CHAMBER
1211 EAST LA HABRA BLVD, SUITE "A"
LA HABRA, CA 90631

SHEET INDEX	
SHEET	CONTENTS
A-0	COVER SHEET
A-1a	SITE PLAN
A-1b	ACCESSIBILITY DETAILS
A-2a	FLOOR PLANS & EQUIPMENT LAYOUT & SCHEDULE
A-2b	DISABLED ACCESSIBILITY REQUIREMENTS
A-3	RESERVED
A-4	EQUIPMENT CUT-SHEET (SPECS)
A-5	RESERVED

PROJECT INFORMATION:

PROJECT'S ADDRESS: 1211 EAST LA HABRA SUITE "A", LA HABRA, CA 90631

TENANT: 4TH CHAMBER

MANAGER/OPERATOR: DAVID OSTENDI

SCOPE OF WORK UNDER THIS PERMIT:
MINOR TENANT IMPROVEMENT OF EXISTING SPACE TO CONVERT AN EXISTING OFFICE/STORE INTO A PRIVATE GYM. NO NEW CONSTRUCTION IS PROPOSED UNDER THIS PERMIT. ONLY INSTALLATION OF NEW EXERCISE EQUIPMENT UTILIZING THE EXISTING PLUMBING, MECHANICAL AND ELECTRICAL WITH NO CHANGES. ALL SUSPENDED CEILING, HVAC, LIGHTING ARE EXISTING TO REMAIN WITH NO CHANGES PROPOSED.

NOTE: THIS T.I. WILL NOT AFFECT OR ALTER THE EXISTING AUTOMATIC FIRE SPRINKLER COVERAGE.

NATURE OF OPERATION:
4TH CHAMBER TRAINING FACILITY WILL BE A PRIVATE TRAINING AND WRESTLING CLINIC. THERE WILL BE APPROXIMATELY SIX EMPLOYEES (TRAINERS), ALL ON PART TIME BASIS AND WORKING ON DIFFERENT SHIFTS OR BY APPOINTMENT. THEY WILL BE PROVIDING ONE-TO-ONE TRAINING TO INDIVIDUAL CLIENTS BASED ON THEIR NEEDS AND PERSONAL GOALS, UTILIZING A VARIETY OF FITNESS EQUIPMENT AND TECHNIQUES. THE SERVICES RANGE FROM STRENGTH TRAINING, FITNESS & WEIGHT LOSS TRAINING, TO MASSAGE THERAPY AND REHABILITATION. THE WRESTLING CLINIC SECTION WILL ALSO PROVIDE EITHER 1:1 OR VERY SMALL GROUP TRAINING, MOSTLY TO YOUNG ADULTS, USING PROFESSIONAL ROLL-UP DOLLAMUR MATS AND SAFETY WALL PADS. THE EXISTING REAR OFFICE WILL CONTINUE TO BE USED AS AN OFFICE WHERE IT WILL HAVE A COMPUTER DESK AND OTHER OFFICE FURNISHINGS. IT WILL ALSO BE USED TO STORE WRESTLING MATS WHEN THEY ARE NOT IN USE. THE FACILITY WILL OPERATE FROM 8 AM TO 8 PM, MONDAY -FRIDAY, AND 8 AM TO 12 PM ON SATURDAYS AND SUNDAYS.

BUILDING SIZE: 5,458 SF, TOTAL BUILDING AREA.

FACILITY SIZE: 1,456 SF, INCLUDING A 41 SF. RESTROOM & 193 SF. OFFICE

MAX. NO. OF EMPLOYEES: 6 (ALL PART TIME & WORKING AT DIFFERENT SHIFTS)

COMFORT HEATING & COOLING, AND VENTILATION SYSTEMS: BUILDING IS HEATED & COOLED BY THE EXISTING ROOF MOUNTED AIR CONDITIONING. NO CHANGES ARE PROPOSED.

OCCUPANCY GROUP: "B"

MAX. OCCUPANT LOAD: 10 AT ANY ONE TIME

TYPE OF CONSTRUCTION: V-B

SPRINKLES: YES.
NOTE: THIS T.I. WILL NOT AFFECT OR ALTER THE EXISTING AUTOMATIC FIRE SPRINKLER COVERAGE.

NUMBER OF STORIES: 1



VICINITY MAP

CONTRACTOR(S) ON THIS PROJECT ARE RESPONSIBLE FOR REVIEW OF ALL PORTIONS OF THESE CONSTRUCTION DOCUMENTS AND SHALL VERIFY ALL DIMENSIONS AND EXISTING CONDITIONS PRIOR TO SUBMISSION OF BIDS AND/OR DURING ALL PHASES OF CONSTRUCTION. THE CONTRACTOR SHALL NOTIFY THE DESIGNER IMMEDIATELY OF ANY DISCREPANCIES, INCONSISTENCIES OR OMISSIONS PRIOR TO COMMENCEMENT OF ANY WORK, AND AWAIT THE DESIGNER'S CLARIFICATION WHERE APPLICABLE. ALL IDEAS, DESIGNS AND SPECIFICATIONS REPRESENTED BY THESE DRAWINGS AND CONSTRUCTION DOCUMENTS ARE AND SHALL REMAIN THE PROPERTY OF THE DESIGNER AND SHALL NOT BE USED FOR ANY OTHER PROJECT OTHER THAN THE ONE IDENTIFIED HEREIN. NONE OF THESE IDEAS OR DESIGNS SHALL BE USED, NOR REPRODUCED, COPIED, ADAPTED OR DISTRIBUTED, WITHOUT THE WRITTEN PERMISSION OF THE DESIGNER.

COVER SHEET

REV.	DATE	DESCRIPTION
	12.12.2023	

DATE: 12.12.2023
JOB NO.: 23-164
DRAWN BY: A.A.
CHECKED BY:

SHEET
A-0
OF SHEETS

SITE GENERAL DISABLED ACCESSIBILITY REQUIREMENTS:

PARKING SPACES

WHERE PARKING SPACES ARE PROVIDED, ACCESSIBLE PARKING SPACES SHALL BE PROVIDED IN NUMBER AND KIND REQUIRED PER SECTION 11B-206 PARKING SPACES, SHOW AND DETAIL ALL REQUIRED DISABLED ACCESS STALLS, INCLUDING DIMENSIONS, MARKINGS, SIGNAGE, CLEAR HEIGHT, ETC., §11B-208

CAR AND VAN STALL ACCESS AISLE SHALL BE 5 FOOT WIDE MINIMUM AND SHALL ADJOIN AN ACCESSIBLE ROUTE. TWO PARKING SPACES SHALL BE PERMITTED TO SHARE A COMMON ACCESS AISLE. §11B-502.3, FIGURES 11B-502.2 & 11B-502.3

ACCESS AISLES SHALL BE MARKED WITH A BLUE PAINTED BORDERLINE AROUND THEIR PERIMETER. THE AREA WITHIN THE BLUE BORDERLINES SHALL BE MARKED WITH HATCHED LINES A MAXIMUM OF 36 INCHES ON CENTER IN A COLOR CONTRASTING WITH THAT OF THE AISLE SURFACE. PREFERABLY BLUE OR WHITE. THE WORDS "NO PARKING" SHALL BE PAINTED ON THE SURFACE WITHIN EACH ACCESS AISLE IN WHITE LETTERS A MINIMUM OF 12 INCHES IN HEIGHT AND LOCATED TO BE VISIBLE FROM THE ADJACENT VEHICULAR WAY. ACCESS AISLE MARKINGS MAY EXTEND BEYOND THE MINIMUM REQUIRED LENGTH. §11B-502.3.3, FIGURE 11B-502.3.3

ACCESS AISLES SHALL NOT OVERLAP THE VEHICULAR WAY. ACCESS AISLES SHALL BE PERMITTED TO BE PLACED ON EITHER SIDE OF THE PARKING SPACE EXCEPT FOR VAN PARKING SPACES WHICH SHALL HAVE ACCESS AISLES LOCATED ON THE PASSENGER SIDE OF THE PARKING SPACES. §11B-502.3.4 ACCESS ROUTE TO SUCH SPACES FROM SITE ENTRANCES AND EXITS. §11B-502.5

PARKING SPACE IDENTIFICATION SIGNS SHALL INCLUDE THE INTERNATIONAL SYMBOL OF ACCESSIBILITY COMPLYING WITH SECTION 11B-103.1.2.1 INTERNATIONAL SYMBOL OF ACCESSIBILITY. §11B-502.6, FIGURE 11B-103.1.2.1

SIGNS IDENTIFYING VAN PARKING SPACES SHALL CONTAIN ADDITIONAL LANGUAGE OR AN ADDITIONAL SIGN WITH THE DESIGNATION "VAN ACCESSIBLE" SIGNS SHALL BE 60 INCHES MINIMUM ABOVE THE FINISH FLOOR OR GROUND SURFACE MEASURED TO THE BOTTOM OF THE SIGN. §11B-502.6

PARKING IDENTIFICATION SIGNS SHALL BE REFLECTORIZED WITH A MINIMUM AREA OF 10 SQUARE INCHES §11B-502.6.1

ADDITIONAL LANGUAGE OR AN ADDITIONAL SIGN BELOW THE INTERNATIONAL SYMBOL OF ACCESSIBILITY SHALL STATE MINIMUM FINE \$250. §11B-502.6.2

A PARKING SPACE IDENTIFICATION SIGN SHALL BE VISIBLE FROM EACH PARKING SPACE. SIGNS SHALL BE PERMANENTLY POSTED EITHER IMMEDIATELY ADJACENT TO THE PARKING SPACE OR WITHIN THE PROJECTED PARKING SPACE WIDTH AT THE HEAD END OF THE PARKING SPACE. SIGNS MAY ALSO BE PERMANENTLY POSTED ON A WALL AT THE INTERIOR END OF THE PARKING SPACES. §11B-502.6.3

EACH ACCESSIBLE CAR AND VAN SPACE SHALL HAVE SURFACE IDENTIFICATION COMPLYING WITH EITHER OF THE FOLLOWING SCHEMES: §11B-502.6.4

A. THE PARKING SPACE SHALL BE MARKED WITH AN INTERNATIONAL SYMBOL OF ACCESSIBILITY COMPLYING WITH SECTION 11B-103.1.2.1 INTERNATIONAL SYMBOL OF ACCESSIBILITY IN WHITE ON A BLUE BACKGROUND A MINIMUM 36 INCHES WIDE BY 36 INCHES HIGH. THE CENTERLINE OF THE INTERNATIONAL SYMBOL OF ACCESSIBILITY SHALL BE A MAXIMUM OF 6 INCHES FROM THE CENTERLINE OF THE PARKING SPACE, ITS SIDES PARALLEL TO THE LENGTH OF THE PARKING SPACE AND ITS LOWER CORNER AT, OR LOWER SIDE ALIGNED WITH, THE END OF THE PARKING SPACE LENGTH. §11B-502.6.4.1

B. THE PARKING SPACE SHALL BE OUTLINED IN BLUE OR PAINTED BLUE AND SHALL BE MARKED WITH AN INTERNATIONAL SYMBOL OF ACCESSIBILITY COMPLYING WITH SECTION 11B-103.1.2.1 INTERNATIONAL SYMBOL OF ACCESSIBILITY A MINIMUM 36 INCHES WIDE BY 36 INCHES HIGH IN WHITE OR A SUITABLE CONTRASTING COLOR. THE CENTERLINE OF THE INTERNATIONAL SYMBOL OF ACCESSIBILITY SHALL BE A MAXIMUM OF 6 INCHES FROM THE CENTERLINE OF THE PARKING SPACE, ITS SIDES PARALLEL TO THE LENGTH OF THE PARKING SPACE AND ITS LOWER CORNER AT, OR LOWER SIDE ALIGNED WITH, THE END OF THE PARKING SPACE. §11B-502.6.4.2

ACCESSIBLE ROUTES

DETECTABLE WARNINGS AND DETECTABLE DIRECTIONAL TEXTURE CIRCULATION PATHS CONTIGUOUS TO VEHICULAR TRAFFIC SHALL BE PHYSICALLY SEPARATED FROM VEHICULAR TRAFFIC. VEHICULAR TRAFFIC INCLUDES TRAVEL THROUGH PARKING FACILITIES, INTO AND OUT OF PARKING SPACES, INTO AND OUT OF ELECTRIC VEHICLE CHARGING SPACES, AND ALONG ROADWAYS, DRIVEWAYS AND DRIVE AISLES. PHYSICAL SEPARATION SHALL BE PROVIDED WITH CIRCULATION PATHS RAISED 4 INCHES MINIMUM ABOVE THE AREA WHERE VEHICULAR TRAFFIC OCCURS. SEE EXCEPTIONS §11B-250.1

DETECTABLE WARNINGS AND DETECTABLE DIRECTIONAL TEXTURED

DETECTABLE WARNING SURFACES SHALL BE YELLOW AND APPROXIMATE F8 33538 OF SAE AMS5TD-595A. §11B-105.1.1.3.1

DETECTABLE WARNING SURFACES SHALL PROVIDE A 10 PERCENT MINIMUM VISUAL CONTRAST WITH ADJACENT WALKING SURFACES. CONTRAST IN PERCENT SHALL BE DETERMINED BY:

CONTRAST PERCENT = ((B1-B2)/B1) X 100 WHERE
B1 = LIGHT REFLECTANCE VALUE (LRV) OF THE LIGHTER AREA AND
B2 = LIGHT REFLECTANCE VALUE (LRV) OF THE DARKER AREA

DOORS, DOORWAYS, AND GATES

DOORS, DOORWAYS, AND GATES PROVIDING USER PASSAGE SHALL BE PROVIDED IN ACCORDANCE WITH 11B-206.5 DOORS, DOORWAYS, AND GATES. §11B-206.5 DOORS, DOORWAYS AND GATES THAT ARE PART OF AN ACCESSIBLE ROUTE SHALL COMPLY WITH 11B-404 DOORS, DOORWAYS, AND GATES. §11B-404.1 DOOR OPENINGS SHALL PROVIDE A CLEAR WIDTH OF 32 INCHES MINIMUM. CLEAR OPENINGS OF DOORWAYS WITH SWINGING DOORS SHALL BE MEASURED BETWEEN THE FACE OF THE DOOR AND THE STOP, WITH THE DOOR OPEN 90 DEGREES. OPENINGS MORE THAN 24 INCHES DEEP SHALL PROVIDE A CLEAR OPENING OF 36 INCHES MINIMUM. THERE SHALL BE NO PROJECTIONS INTO THE REQUIRED CLEAR OPENING WIDTH LOWER THAN 34 INCHES ABOVE THE FINISH FLOOR OR GROUND.

PROJECTIONS INTO THE CLEAR OPENING WIDTH BETWEEN 34 INCHES AND 80 INCHES ABOVE THE FINISH FLOOR OR GROUND SHALL NOT EXCEED 4 INCHES. §11B-404.2.3 SWINGING DOORS AND GATES SHALL HAVE MANEUVERING CLEARANCES COMPLYING WITH TABLE 11B-404.2.4.1

DOORWAYS LESS THAN 36 INCHES WIDE WITHOUT DOORS OR GATES, SLIDING DOORS, OR FOLDING DOORS SHALL HAVE MANEUVERING CLEARANCES COMPLYING WITH TABLE 11B-404.2.4.2 MANEUVERING CLEARANCES FOR FORWARD APPROACH SHALL BE PROVIDED WHEN ANY OBSTRUCTION WITHIN 18 INCHES OF THE LATCH SIDE AN INTERIOR DOORWAY, OR WITHIN 24 INCHES OF THE LATCH SIDE OF AN EXTERIOR DOORWAY, PROJECTS MORE THAN 8 INCHES BEYOND THE FACE OF THE DOOR, MEASURED PERPENDICULAR TO THE FACE OF THE DOOR OR GATE. §11B-404.2.4.3

THRESHOLDS, IF PROVIDED AT DOORWAYS, SHALL BE 1/2 INCH HIGH MAXIMUM, RAISED THRESHOLDS AND CHANGES IN LEVEL AT DOORWAYS SHALL COMPLY WITH 11B-302 FLOOR OR GROUND SURFACES AND 11B-303 CHANGES IN LEVEL. §11B-404.2.5 HANDLES, PULLS, LATCHES, LOCKS, AND OTHER OPERABLE PARTS ON DOORS AND GATES SHALL COMPLY WITH 11B-303.4

OPERATION OPERABLE PARTS OF SUCH HARDWARE SHALL BE 34 INCHES MINIMUM AND 44 INCHES MAXIMUM ABOVE THE FINISH FLOOR OR GROUND, WHERE SLIDING DOORS ARE IN THE FULLY OPEN POSITION, OPERATING HARDWARE SHALL BE

EXPOSED AND USABLE FROM BOTH SIDES. §11B-404.2.7

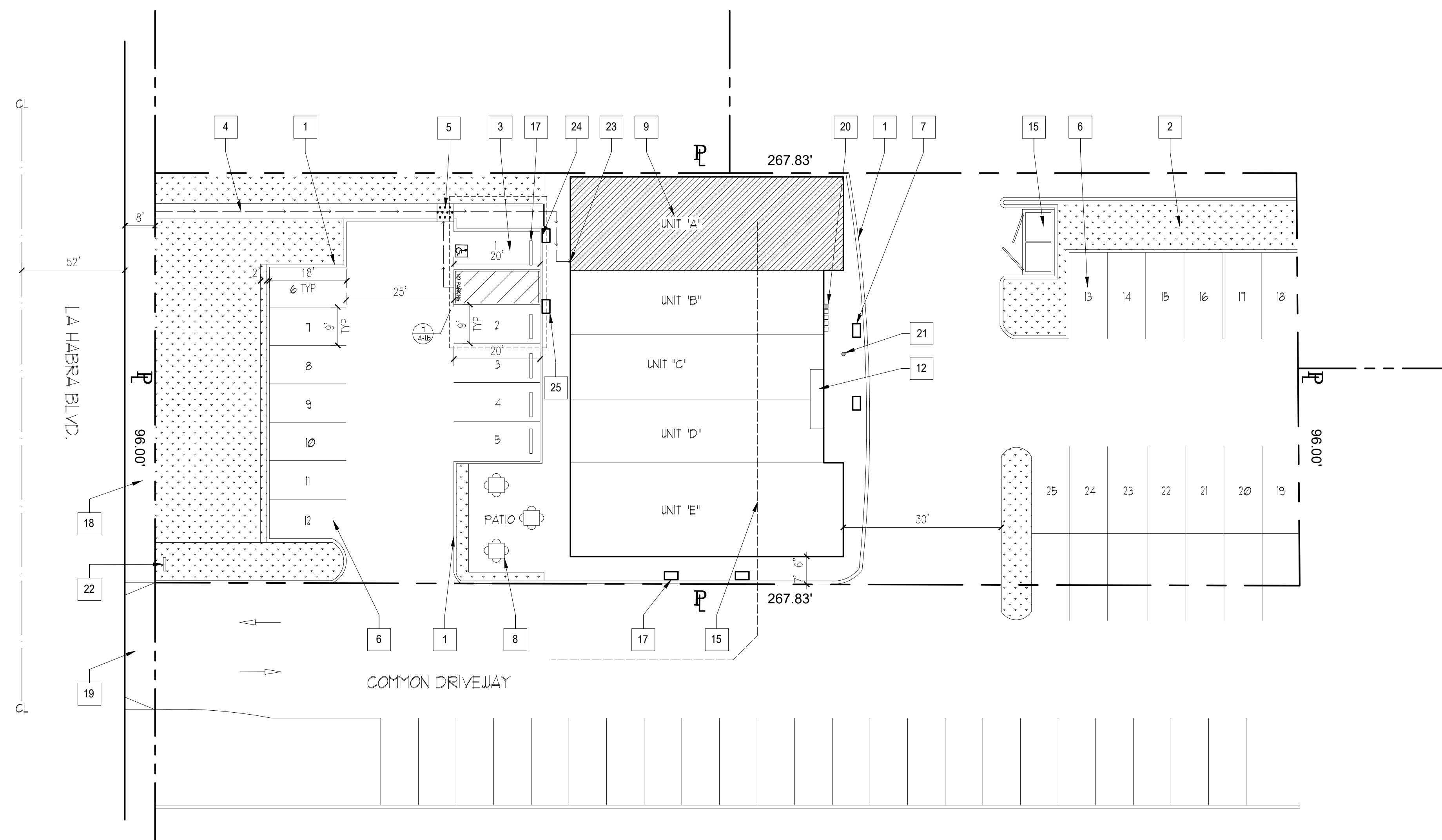
THE FORCE FOR PUSHING OR PULLING OPEN A DOOR OR GATE OTHER THAN FIRE DOORS SHALL BE AS FOLLOWS: §11B-404.2.9

- A. INTERIOR HINGED DOORS AND GATES: 5 POUNDS MAXIMUM.
- B. SLIDING OR FOLDING DOORS: 5 POUNDS MAXIMUM.
- C. REQUIRED FIRE DOORS: THE MINIMUM OPENING FORCE ALLOWABLE BY THE APPROPRIATE ADMINISTRATIVE AUTHORITY, NOT TO EXCEED 15 POUNDS.
- D. EXTERIOR HINGED DOORS: 5 POUNDS MAXIMUM.

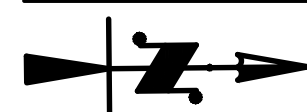
SWINGING DOOR AND GATE SURFACES WITHIN 10 INCHES OF THE FINISH FLOOR OR GROUND MEASURED VERTICALLY SHALL HAVE A SMOOTH SURFACE ON THE PUSH SIDE EXTENDING THE FULL WIDTH OF THE DOOR OR GATE. PARTS CREATING HORIZONTAL OR VERTICAL JOINTS IN THESE SURFACES SHALL BE WITHIN 1/16 INCH OF THE SAME PLANE AS THE OTHER AND BE FREE OF SHARP OR ABRASIVE EDGES. CAVITIES CREATED BY ADDED KICK PLATES SHALL BE CAPPED. §11B-404.2.10

SITE PLAN KEYNOTES: (Ⓢ)

1. EXISTING CURB
2. EXISTING LANDSCAPING
3. EXISTING DISABLED ACCESSIBLE PARKING
4. EXISTING ACCESSIBLE PATH OF TRAVEL FROM THE PUBLIC SIDEWALK (1:20 MAX SLOPE, 4' MIN WIDTH)
5. EXISTING YELLOW TRUNCATED DOMES, PER DETAIL 6 - SHEET A1-b
6. EXISTING STANDARD PARKING STALLS (24 COUNT)
7. EXISTING BUILDING COLUMNS
8. EXISTING COMMON PATIO DINING
9. PROPOSED T.I. OF AN EXISTING OFFICE/STORAGE SPACE INTO A PRIVATE GYM. ALL EXTERIOR FEATURES ARE EXISTING.
10. RESERVED
11. RESERVED
12. EXISTING BUILDING ELECTRICAL ROOMS
13. RESERVED
14. EXISTING SAMPLE BOX
15. BUILDING EXISTING SANITARY SEWER LINE
16. EXISTING TRASH ENCLOSURE (7'-6" X 16')
17. EXISTING WHEEL STOP PER DETAIL 3 - SHEET A-1b
18. EXISTING PUBLIC SIDEWALK
19. EXISTING COMMON DRIVEWAY APPROACH
20. EXISTING 1.5" DIAM. GAS METER FOR UNIT "A"
21. EXISTING CLEANOUT
22. EXISTING ENTRY SIGN. SEE DETAIL 1 SHEET A-1b
23. EXISTING ACCESSIBLE ENTRY & SIGNAGE
24. WALL MOUNTED PARKING SIGN PER DETAIL 1 - SHEET A-1b
25. EXISTING BUILDING CANOPY COLUMN



SITE PLAN (FOR REFERENCE ONLY - ALL EXISTING)



- **ENGINEERING DIVISION NOTES:**
- 1. A PERMIT WILL BE REQUIRED FROM THE ENGINEERING DIVISION, FOR ANY OFFSITE WORK.
- 2. NO STOCKPILES WILL BE ALLOWED IN THE PUBLIC RIGHT-OF-WAY. ALL & ANY MATERIAL & STOCKPILES SHALL BE WITHIN THE PRIVATE PROPERTY & SHALL BE DISPOSED THAT SAME DAY.

4TH CHAMBER
1211 EAST LA HABRA BLVD. SUITE "A"
LA HABRA, CA 90631

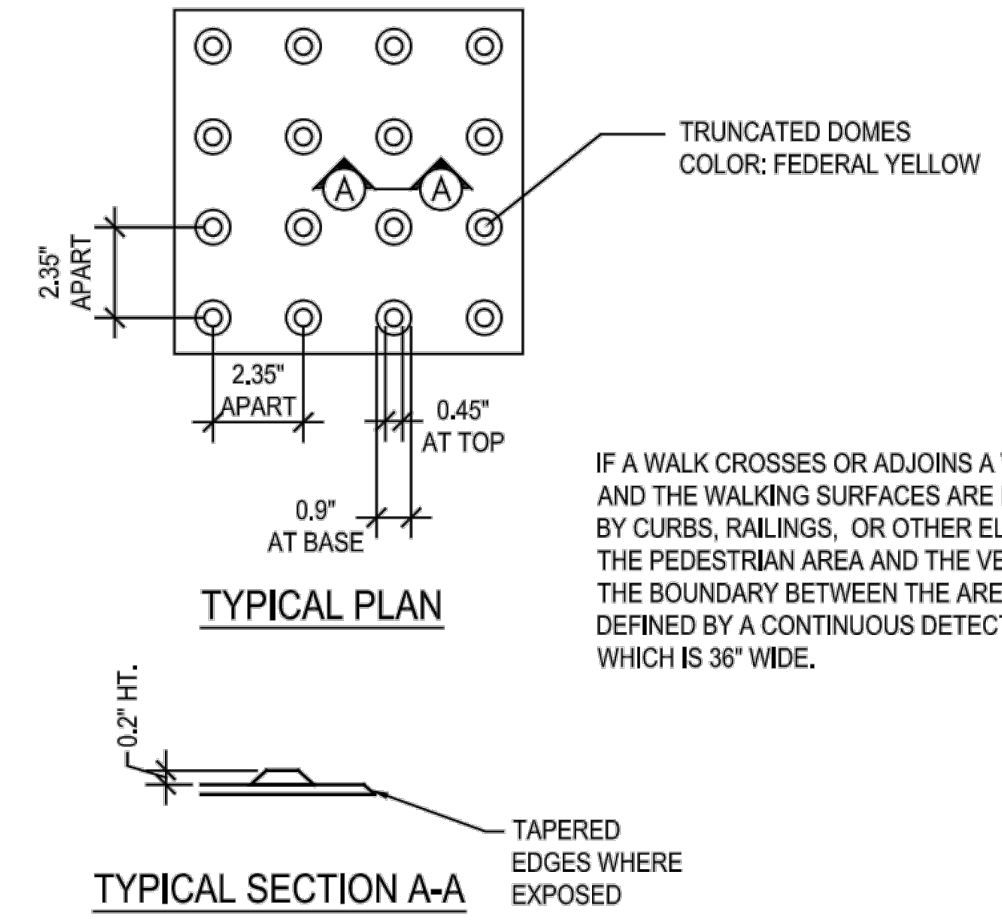
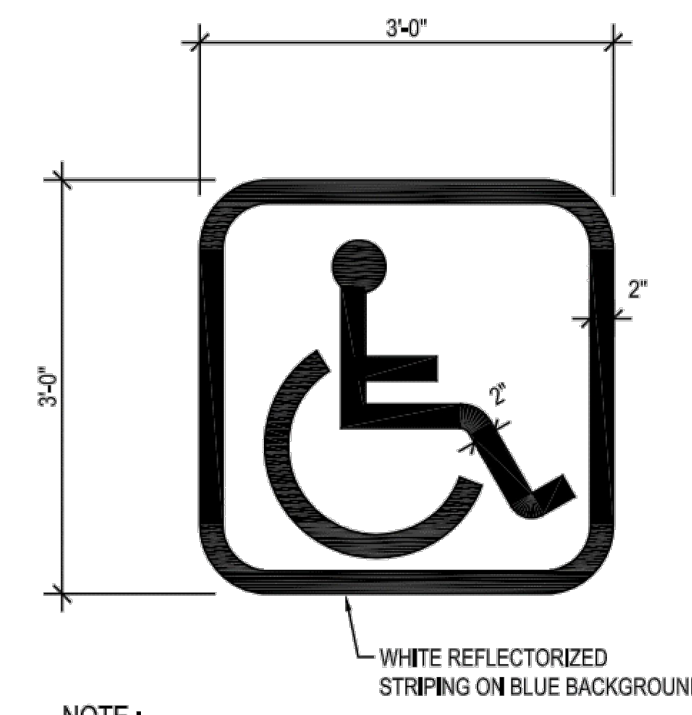
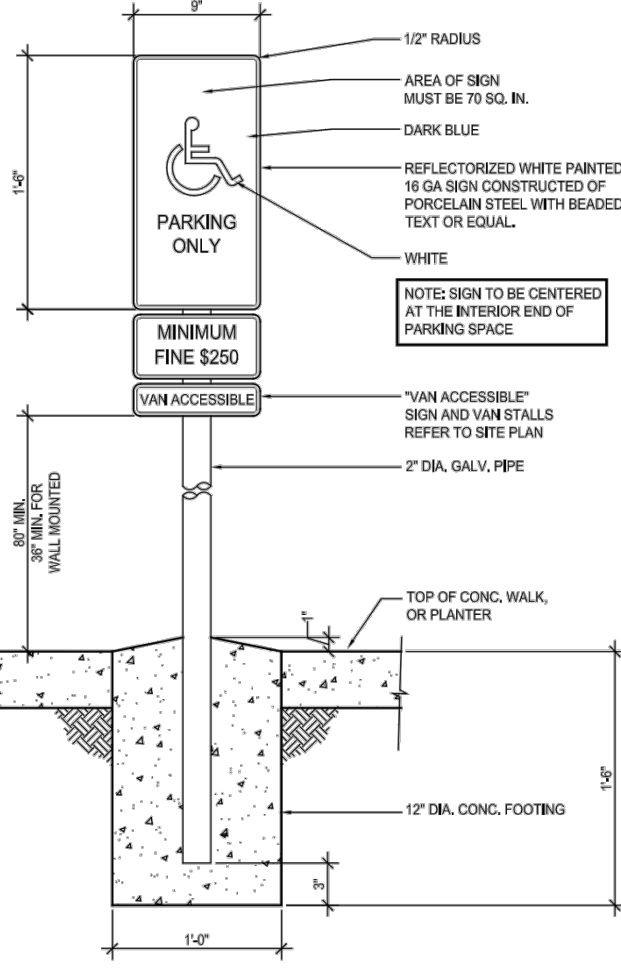
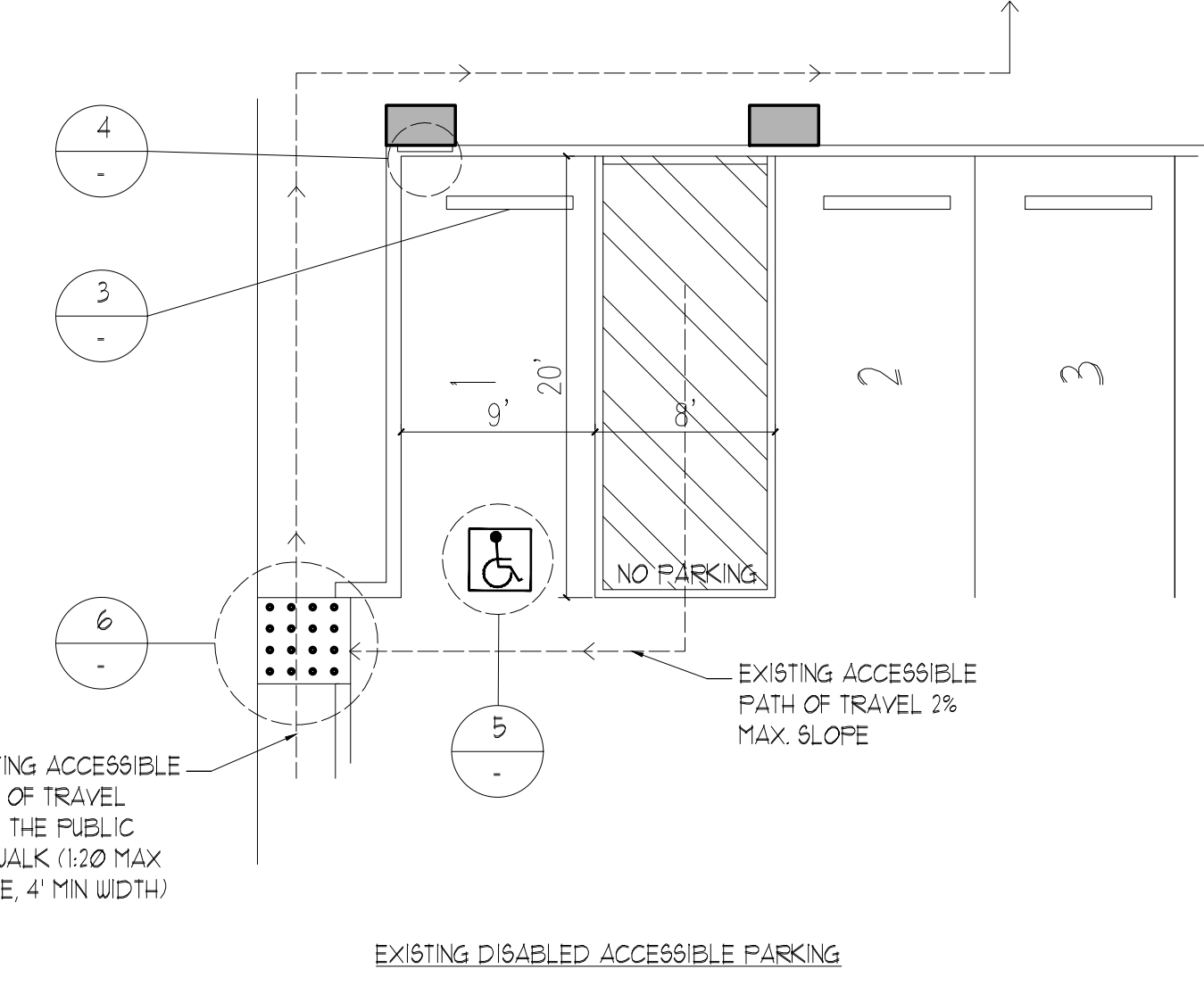
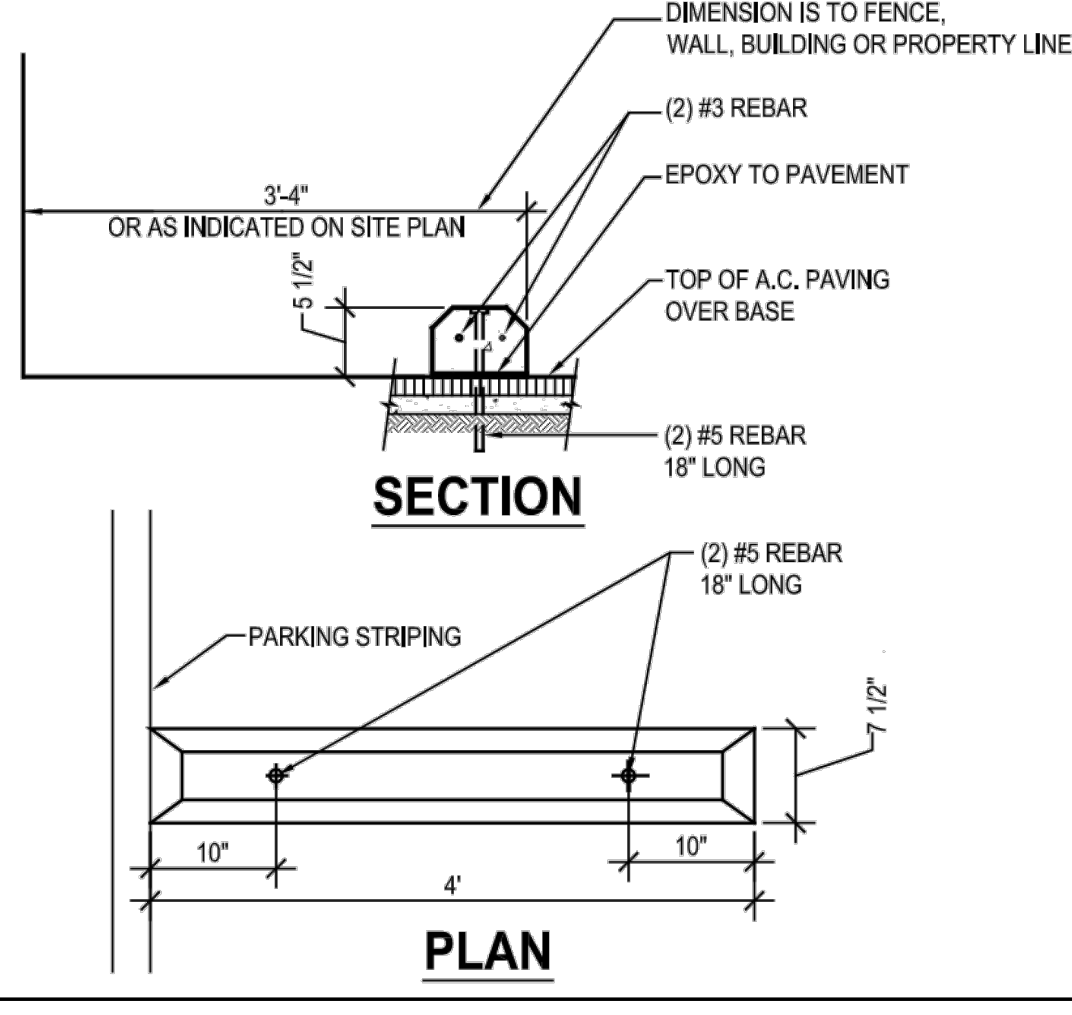
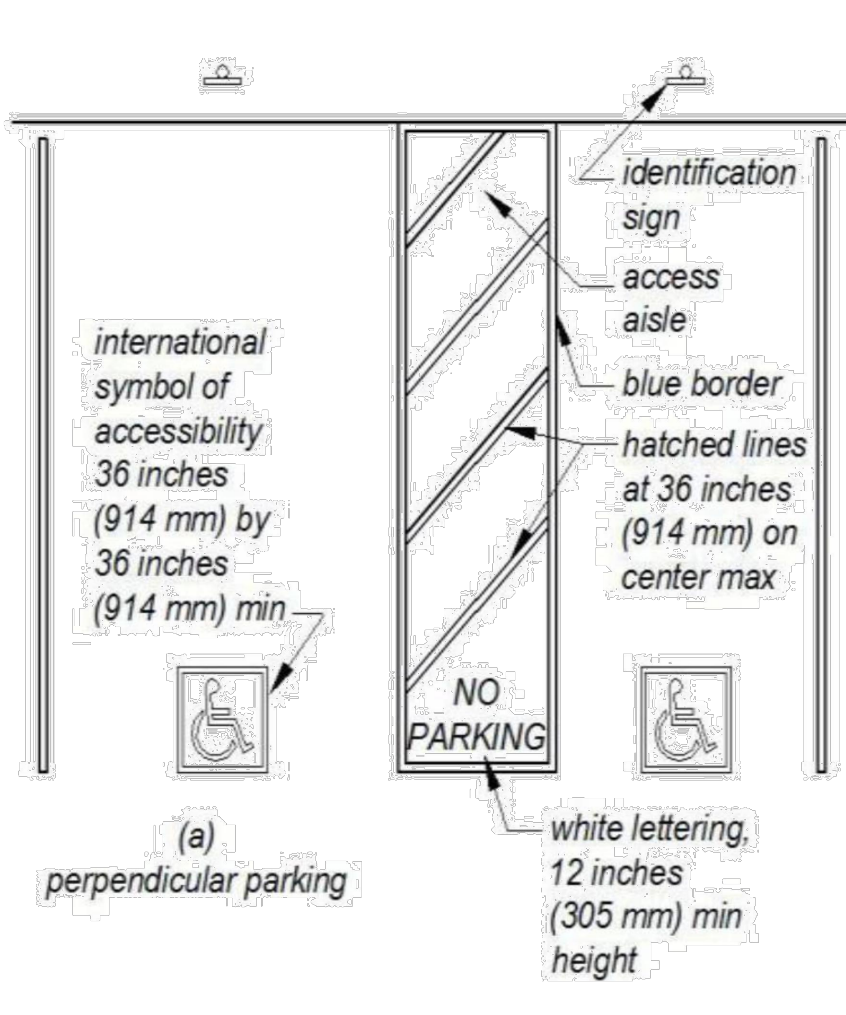
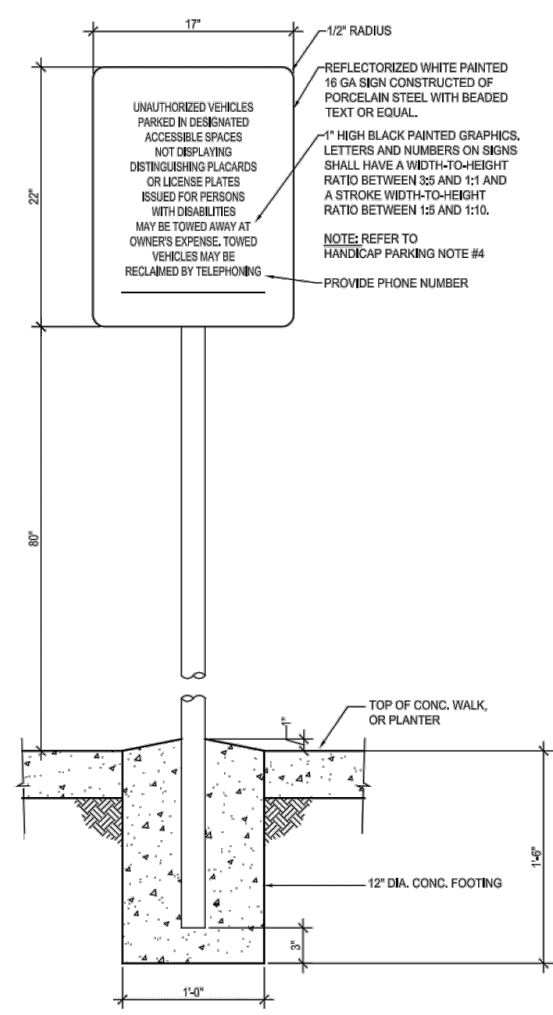
CONTRACTOR(S) ON THIS PROJECT ARE RESPONSIBLE FOR REVIEW OF ALL PORTIONS OF THESE CONSTRUCTION DOCUMENTS AND SHALL VERIFY ALL DIMENSIONS AND EXISTING CONDITIONS PRIOR TO SUBMISSION OF BIDS AND/OR DURING ALL PHASES OF CONSTRUCTION. THE CONTRACTOR SHALL NOTIFY THE DESIGNER IMMEDIATELY OF ANY DISCREPANCIES, INCONSISTENCIES OR OMISSIONS PRIOR TO COMMENCEMENT OF ANY WORK, AND AWAIT THE DESIGNER'S CLARIFICATION WHERE APPLICABLE. ALL IDEAS, DESIGNS AND SPECIFICATIONS REPRESENTED BY THESE DRAWINGS AND CONSTRUCTION DOCUMENTS ARE AND SHALL REMAIN THE PROPERTY OF THE DESIGNER AND SHALL NOT BE USED FOR ANY OTHER PROJECT OTHER THAN THE ONE IDENTIFIED HEREIN. NONE OF THESE IDEAS OR DESIGNS SHALL BE USED, NOR REPRODUCED, COPIED, ADAPTED OR DISTRIBUTED, WITHOUT THE WRITTEN PERMISSION OF THE DESIGNER.

SITE PLAN

REV.	DATE	DESCRIPTION
DATE	23-164	
JOB NO.		
DRAWN BY	AA	CHECKED BY
SHEET		

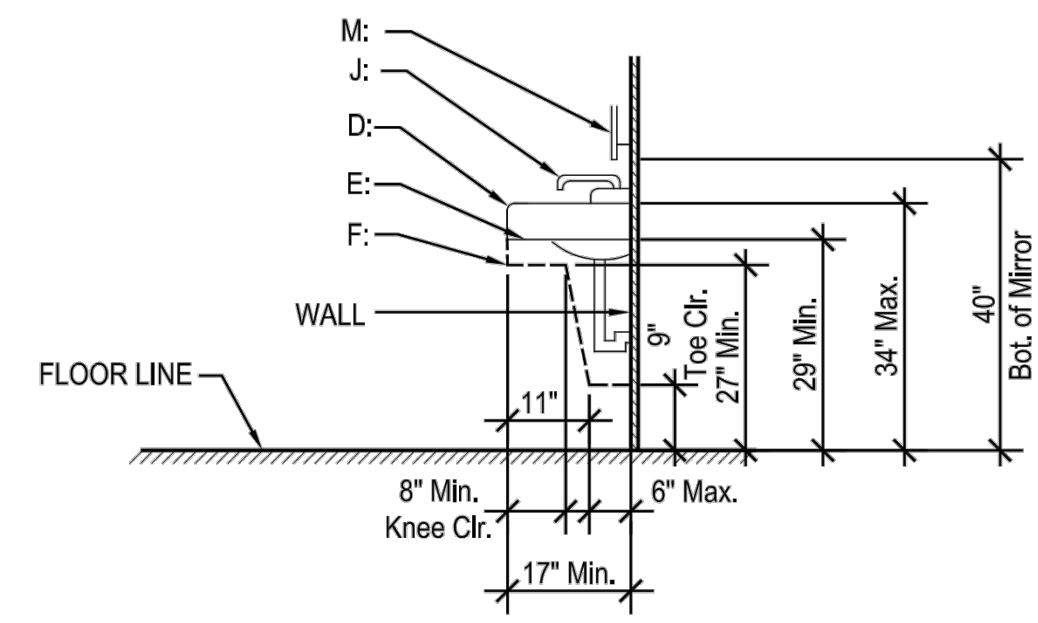
A = 1 of 1 SHEETS

4TH CHAMBER
1211 EAST LA HABRA BLVD. SUITE "A"
LA HABRA, CA 90631



NOTE:
1. CENTER SYMBOL IN STALL AND ALIGN WITH END OF STALL
2. ALL LINES SHALL BE 2" WIDE
3. STENCIL ONE SYMBOL IN EA. HANDICAP STALL

TYPICAL PARKING ACCESSIBLE PARKING DETAILS - ALL EXISTING - ALSO SEE NOTES ON SHEET A-1a FOR REQUIREMENTS RELATED TO ACCESSIBLE PARKING & PATH OF TRAVEL

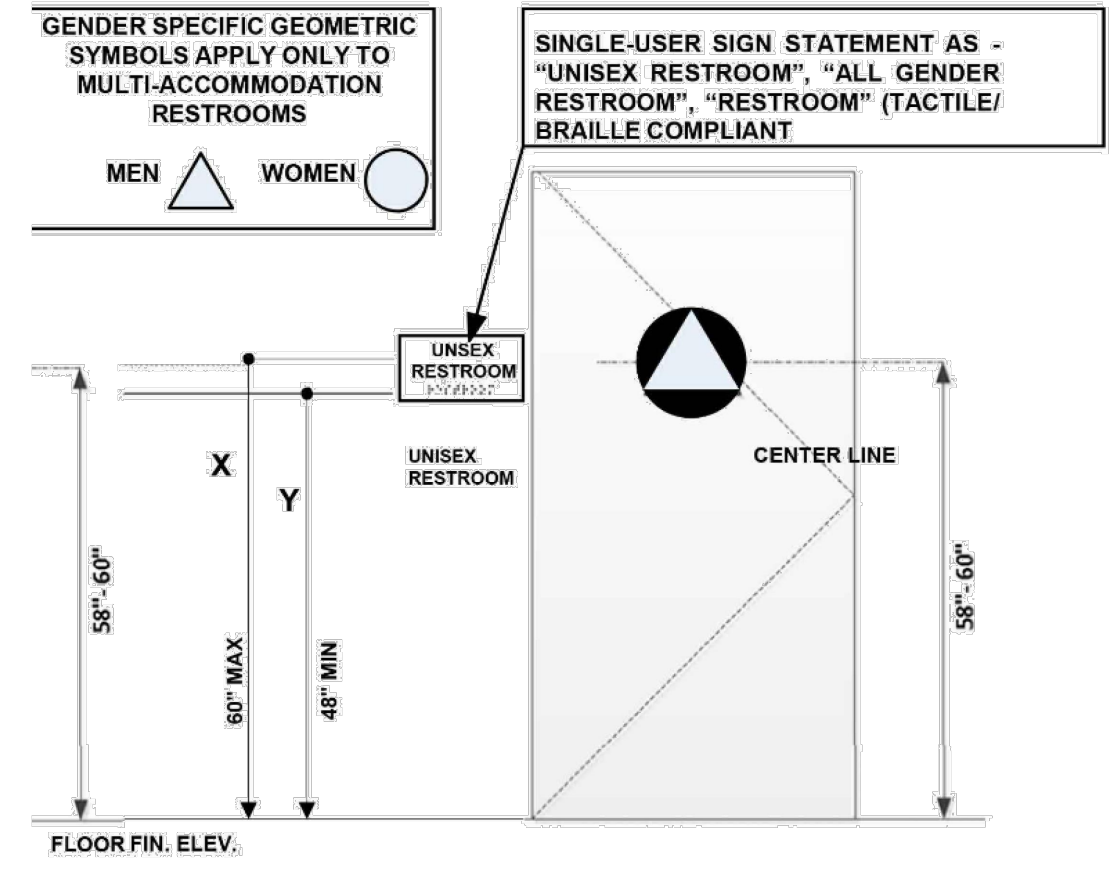
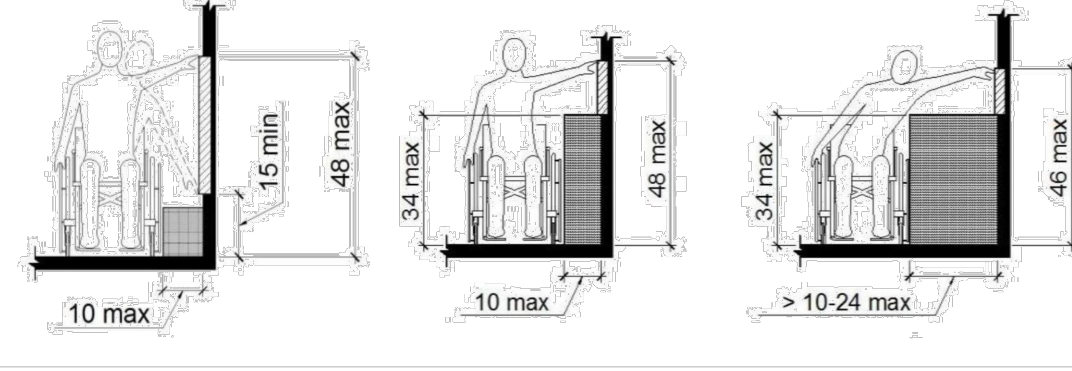


- A. Provide Minimum 30" x 48" clear space in front of lavatory that allows forward approach.
- B. Required clear space shall adjoin or overlap an accessible route and extend a Maximum of 19" underneath the lavatory.
- C. Lavatories adjacent to a side wall shall have a minimum 18" distance to center of fixture.
- D. 34" maximum height of rim or counter above floor surface.
- E. 29" minimum clearance from bottom of apron to the floor.
- F. Knee clearance under front lip shall have a minimum of 27" high, wide, and extend a minimum of 8" in depth from front of the lavatory.
- G. Toe clearance under lavatory shall be minimum of 9" high, 30" wide, and extend a minimum of 17" in depth from the front of the lavatory.
- H. Drain and hot water piping shall be insulated or configured to prevent contact.
- I. There shall be no sharp or abrasive elements under lavatory.
- J. Faucets shall be lever type, electronically activated or approved self closing valves (Min. 10 second open flow).
- K. Faucets shall be operable with one hand and shall not require tight grasping, pinching or twisting of the wrist.
- L. 5 lb. maximum force required to activate controls.
- M. Mirror

ACCESSIBILITY REQUIREMENTS FOR LOCKERS:

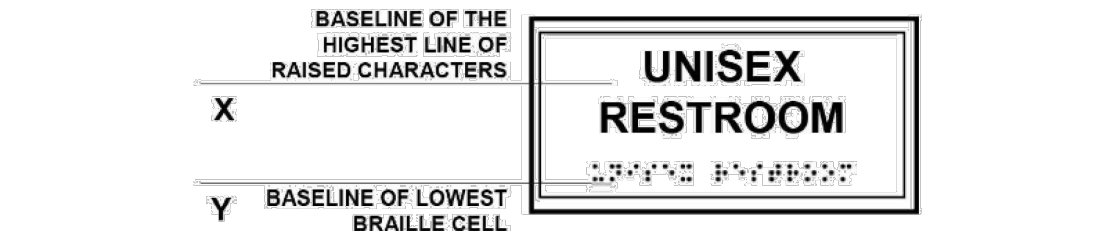
- a. 95 BUT NOT LESS THAN ONE OF THE LOCKERS TO BE ACCESSIBLE PER CBC 1B-3221.
- b. PROVIDE CLEAR FLOOR SPACE PER CBC 1B-812.
- c. HEIGHT OF THE STORAGE ELEMENT SHALL COMPLY WITH ONE OF THE REACH RANGES PRESCRIBED IN CBC 1B-308 PER CBC 1B-813.
- d. OPERABLE PARTS THAT ARE OPERABLE WITH ONE HAND & DOES NOT REQUIRE TIGHT GRASPING, PINCHING, OR TWISTING OF THE WRIST PER CBC 1B-309.4.
- e. THE FORCE REQUIRED TO ACTIVATE OPERABLE PARTS SHALL BE 5-POUNDS MAX. CBC 1B-309.4.

Where side reach is unobstructed, the high side reach shall be 48 inches maximum and the low side reach shall be 15 inches minimum above the finish floor or ground.



NOTE: PICTOGRAMS NOT REQUIRED

The provisions of CBC Chapter 11B require that a sanitary facility that is not specifically identified as for "men" or "women" (referred to in Chapter 11B as a "unisex" facility) have a geometric symbol on the door that is an equilateral triangle superimposed onto a circle. The "unisex" symbol is the only specific indicator required to be provided by Chapter 11B for a toilet facility that is available for use by all individuals. No pictogram, text, or braille is required on the symbol. (See attachment, Exhibit A.)

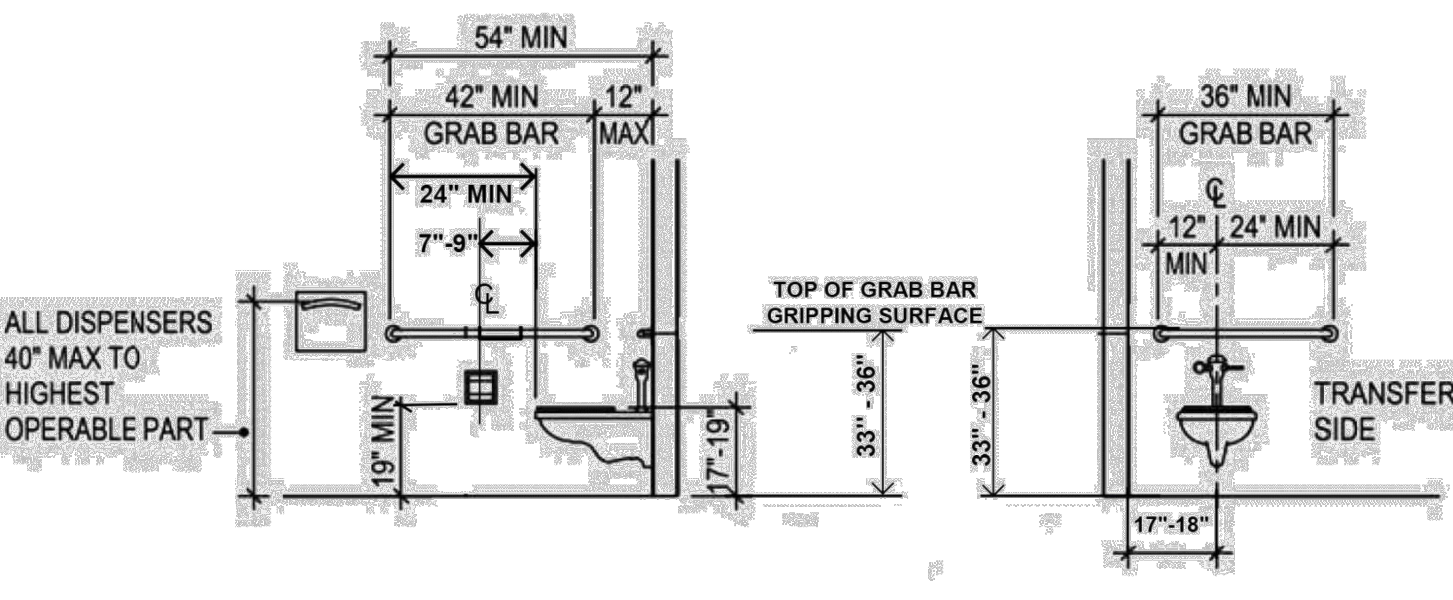
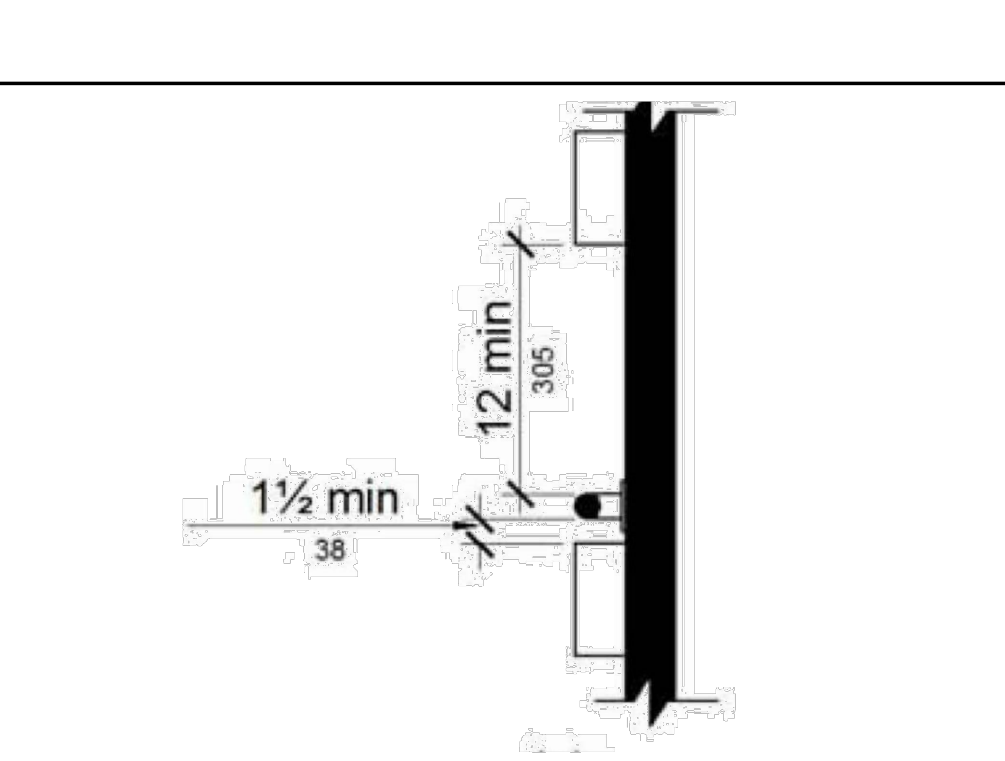
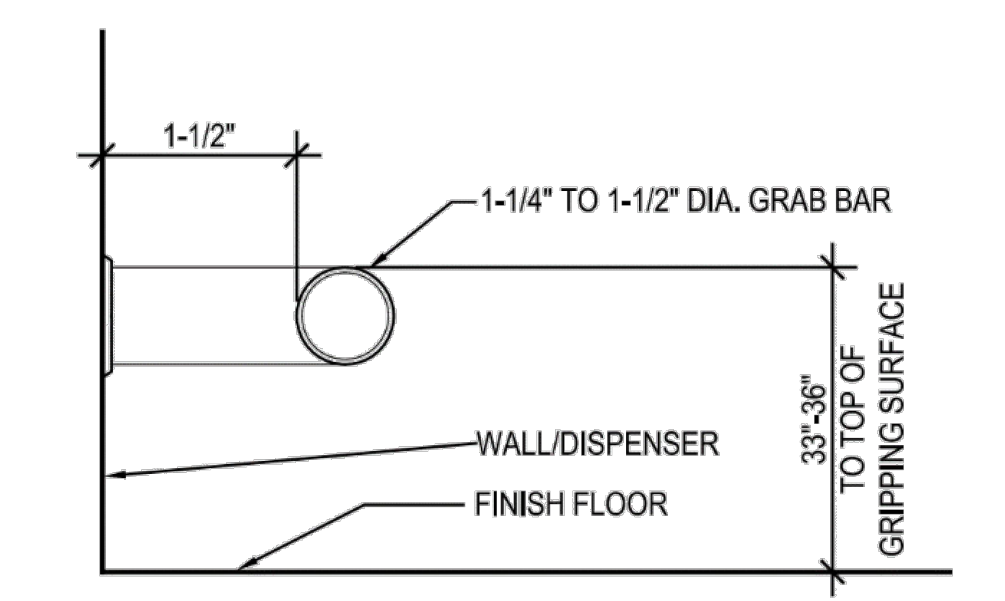


TACTILE / RAISED CHARACTER & GD-II BRAILLE SIGN

11B-703.4.1 Height above finish floor or ground.

Tactile characters on signs shall be located 48 inches (1219 mm) minimum above the finish floor or ground surface, measured from the baseline of the lowest Braille cells and 60 inches (1524 mm) maximum above the finish floor or ground surface, measured from the baseline of the highest line of raised characters. Exception: Tactile characters for elevator car controls shall not be required to comply with Section 11B-703.4.1.

- NOTES:**
1. GRAB BARS AT WATER CLOSET (511.1A-9) ONE AT SIDE 42" LONG EXTENDING 24" IN FRONT OF WATER CLOSET. ONE AT REAR OF WATER CLOSET 36" LONG. BOTH MOUNTED 33" ABOVE FLOOR. (EXCEPTION REAR GRAB BAR OVER TANK TYPE WATER CLOSET MAY BE UP TO 36" ABOVE FLOOR) BARS SHALL BE 1-1/4" TO 1-1/2" IN DIAMETER WITH 1-1/2" CLEARANCE TO WALL.
 2. BAR FASTENERS AND MOUNTING SUPPORT SHALL BE ABLE TO WITHSTAND 250 LBS. POINT LOAD IN BENDING. SHEAR TENSION. ROTATION IN FITTING NOT ALLOWED SURFACE OF WALL OF ADJACENT TO GRAB BAR IS TO BE FREE OF SHARP OR ABRASIVE ELEMENTS.



ACCESSIBILITY
DETAILS

REV.	DATE	DESCRIPTION

DATE: 23-164
JOB NO.:
DRAWN BY: AA
CHECKED BY:
SHEET

TYPICAL ACCESSIBLE UNISEX RESTROOM - ALL EXISTING - ALSO SEE NOTES ON SHEET A-2b FOR REQUIREMENTS RELATED TO ACCESSIBLE UNISEX RESTROOM

4TH CHAMBER
1211 EAST LA HABRA BLVD, SUITE "A"
LA HABRA, CA 90631

CONTRACTOR(S) ON THIS PROJECT ARE RESPONSIBLE FOR REVIEW OF ALL PORTIONS OF THESE CONSTRUCTION DOCUMENTS AND SHALL VERIFY ALL DIMENSIONS AND EXISTING CONDITIONS PRIOR TO SUBMISSION OF BIDS AND/OR DURING ALL PHASES OF CONSTRUCTION. THE CONTRACTOR SHALL NOTIFY THE DESIGNER IMMEDIATELY OF ANY DISCREPANCIES, INCONSISTENCIES OR OMISSIONS PRIOR TO COMMENCEMENT OF ANY WORK, AND AWAIT THE DESIGNER'S CLARIFICATION WHERE APPLICABLE. ALL IDEAS, DESIGNS AND SPECIFICATIONS REPRESENTED BY THESE DRAWINGS AND CONSTRUCTION DOCUMENTS ARE AND SHALL REMAIN THE PROPERTY OF THE DESIGNER AND SHALL NOT BE USED FOR ANY OTHER PROJECT OTHER THAN THE ONE IDENTIFIED HEREIN. NONE OF THESE IDEAS OR DESIGNS SHALL BE USED, NOR REPRODUCED, COPIED, ADAPTED OR DISTRIBUTED, WITHOUT THE WRITTEN PERMISSION OF THE DESIGNER.

GENERAL EQUIPMENT SCHEDULE

#	NAME/DESCRIPTION	SIZE (WXLXH)	QUANTITY	SPEC SHEET
1	COMPUTER DESK	30" X 5'	1	
2	SQUAT RACK	36" X 41"	2	A-4 - PLATE 9
3	FLYO BOXES	28" X 28"	1	A-4 - PLATE 1
4	AIR BIKE	22" X 4' X 50"	1	A-4 - PLATE 6
5	HORIZONTAL PLATE RACK	4' X 1' X 1'	2	A-4 - PLATE 5
6	FLAT BENCH	21" X 4' X 11"	1	A-4 - PLATE 1
7	ADJUSTABLE BENCH	21" X 4' X 11"	1	A-4 - PLATE 8
8	DUMBBELL RACK	4' X 2' X 3'	1	A-4 - PLATE 4
9	KETTLE BELL RACK	5' X 22" X 28"	1	A-4 - PLATE 2
10	ARCADIA CABLE MACHINE	55" X 3' X 80"	1	A-4 - PLATE 3
11	WALL PAD	20' X 6'	1	
12	WRESTLING MATS	15' X 15'	1	A-4 - PLATE 11
13	PORTABLE MASSAGE TABLE	30" X 13" X 33"	1	A-4 - PLATE 10

NOTE: THE ENTIRE FLOOR (EXCEPT THE RESTROOM) WILL BE COVERED WITH 3/8" "FIT-LOCK" INTERLOCKING SAFETY (IMPACT/SHOCK ABSORBENT) GYM SPORT-RUBBER TILES. THIS WILL BE FLUSH WITH THE CERAMIC TILE IN THE RESTROOM.

WINDOW SCHEDULE

SYMBOL	SIZE	TYPE	REMARKS
①	8' X 5'	FIXED	EXISTING TEMP GLASS, STORE FRONT ALUMINUM WINDOW

DOOR SCHEDULE

SYMBOL	SIZE	TYPE	REMARKS
①	3' X 6'-8"	H.C.	EXISTING TEMP GLASS 4 STEEL RLUM WITH GRIDS W/ SELF CLOSER 4 STEEL FRAME LEVER H.W.
②	3' X 6'-8"	H.C.	EXISTING - WOOD, INDUSTRIAL GRADE W/ SELF CLOSER 4 LEVER H.W.
③			
④			

LEGEND:

— EXISTING WALLS

FLOOR PLANS

REV. DATE DESCRIPTION

DATE
23-164

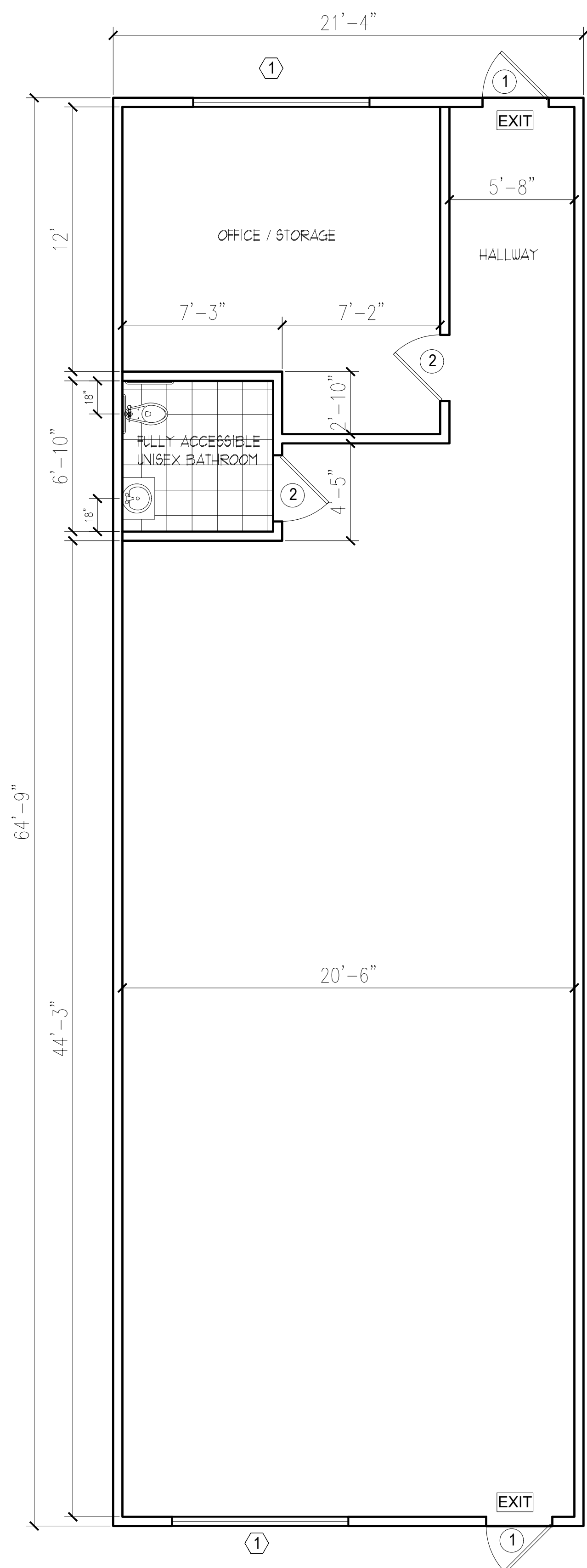
JOB NO.

DRAWN BY
AA

CHECKED BY

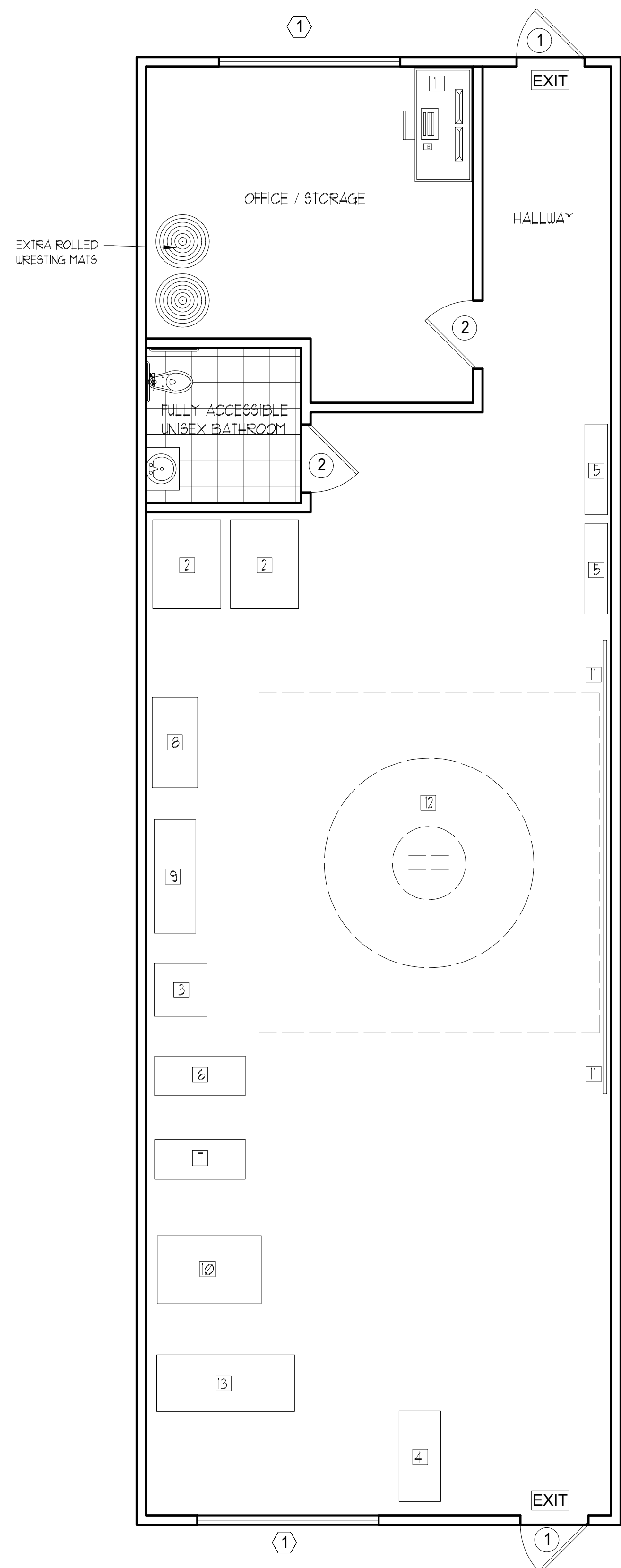
SHEET

A=2a
OF SHEETS



EXISTING FLOOR PLAN

(DIMENSION PLAN) SCALE 1/4" = 1'



PROPOSED FLOOR PLAN W/ EQUIPMENT & FIXTURES

SCALE 1/4" = 1'

DISABLED ACCESSIBILITY REQUIREMENTS (ALL EXISTING - NO CHANGES)

TURNING SPACE

FLOOR OR GROUND SURFACES OF A TURNING SPACE SHALL COMPLY WITH §1B-302. CHANGES IN LEVEL, SLOPES EXCEEDING 1:48, AND DETECTABLE WARNINGS SHALL NOT BE PERMITTED. §1B-304.2, §1B-305.2, §1B-404.2.4.4

CIRCULAR TURNING SPACES SHALL BE A SPACE OF 60 INCHES DIAMETER MINIMUM AND MAY INCLUDE KNEE AND TOE CLEARANCE COMPLYING WITH 1B-306 KNEE AND TOE CLEARANCE. §1B-304.3.1

T-SHAPED TURNING SPACES SHALL BE A T-SHAPED SPACE WITHIN A 60 INCH SQUARE MINIMUM WITH ARMS AND BASE 36 INCHES WIDE MINIMUM. EACH ARM OF THE T SHALL BE CLEAR OF OBSTRUCTIONS 12 INCHES MINIMUM IN EACH DIRECTION AND THE BASE SHALL BE CLEAR OF OBSTRUCTIONS 24 INCHES MINIMUM. §1B-304.3.2, FIGURE 1B-304.3.2

KNEE AND TOE CLEARANCE

FOR LAVATORIES AND BUILT-IN DINING AND WORK SURFACES REQUIRED TO BE ACCESSIBLE, TOE CLEARANCE SHALL BE PROVIDED THAT IS 30 INCHES IN WIDTH AND 9 INCHES IN HEIGHT ABOVE THE FINISH FLOOR OR GROUND FOR A DEPTH OF 19 INCHES MINIMUM. §1B-306.2.1 TOE CLEARANCE SHALL EXTEND 19 INCHES MAXIMUM UNDER LAVATORIES FOR TOILET AND BATHING FACILITIES AND 25 INCHES MAXIMUM UNDER OTHER ELEMENTS. §1B-306.2.2 AT LAVATORIES IN TOILET AND BATHING FACILITIES, KNEE CLEARANCE SHALL BE PROVIDED THAT IS 30 INCHES IN WIDTH FOR A DEPTH OF 11 INCHES AT 9 INCHES ABOVE THE FINISH FLOOR OR GROUND AND FOR A DEPTH OF 8 INCHES AT 21 INCHES ABOVE THE FINISH FLOOR OR GROUND INCREASING TO 29 INCHES HIGH MINIMUM ABOVE THE FINISH FLOOR OR GROUND AT THE FRONT EDGE OF A COUNTER WITH A BUILT-IN LAVATORY OR AT THE FRONT EDGE OF A WALL-MOUNTED LAVATORY FIXTURE. §1B-306.3.3, FIGURE 1B-306.3(C) AT DINING AND WORK SURFACES REQUIRED TO BE ACCESSIBLE, KNEE CLEARANCE SHALL BE PROVIDED THAT IS 30 INCHES IN WIDTH AT 21 INCHES ABOVE THE FINISH FLOOR OR GROUND FOR A DEPTH OF AT LEAST 19 INCHES. §1B-306.3

PROTRUDING OBJECTS

EXCEPT FOR HANDRAILS, OBJECTS WITH LEADING EDGES MORE THAN 21 INCHES AND LESS THAN 80 INCHES ABOVE THE FINISH FLOOR OR GROUND SHALL PROTRUDE NO MORE THAN 4 INCHES HORIZONTALLY INTO THE CIRCULATION PATH. HANDRAILS MAY PROTRUDE 4½ INCHES MAXIMUM. §1B-307.2, FIGURE 1B-307.2

FREESTANDING OBJECTS MOUNTED ON POSTS OR PYLONS SHALL OVERHANG CIRCULATION PATHS NO MORE THAN 12 INCHES WHEN LOCATED FROM 21 TO 80 INCHES ABOVE THE FINISH FLOOR OR GROUND. §1B-307.3, FIGURE 1B-307.3(A)

PROTRUDING OBJECTS SHALL NOT REDUCE THE CLEAR WIDTH REQUIRED FOR ACCESSIBLE ROUTES §1B-307.5

LOWEST EDGE OF A SIGN OR OTHER OBSTRUCTION, WHEN MOUNTED BETWEEN POSTS OR PYLONS SEPARATED WITH A CLEAR DISTANCE GREATER THAN 12 INCHES, SHALL BE LESS THAN 21 INCHES OR MORE THAN 80 INCHES ABOVE THE FINISH FLOOR OR GROUND. §1B-307.3, FIGURE 1B-307.3(B)

VERTICAL CLEARANCE SHALL BE AT LEAST 80 INCHES HIGH ON CIRCULATION PATHS EXCEPT AT DOOR CLOSERS AND DOORSTOPS, WHICH MAY BE 78 INCHES MINIMUM ABOVE THE FINISH FLOOR OR GROUND. §1B-307.4

GUARDRAILS OR OTHER BARRIERS WITH A LEADING EDGE LOCATED 21 INCHES MAXIMUM ABOVE THE FINISH FLOOR OR GROUND SHALL BE PROVIDED WHERE THE VERTICAL CLEARANCE ON CIRCULATION PATHS IS LESS THAN 80 INCHES HIGH. §1B-307.4, FIGURE 1B-307.4

WHERE A GUY SUPPORT IS USED WITHIN EITHER THE WIDTH OF A CIRCULATION PATH OR 24 INCHES MAXIMUM OUTSIDE OF A CIRCULATION PATH, A VERTICAL GUY BRACE, SIDEWALK GUY OR SIMILAR DEVICE SHALL BE USED TO PREVENT A HAZARD OR AN OVERHEAD OBSTRUCTION. §1B-307.4.1, FIGURE 1B-307.4.1

REACH RANGES

ELECTRICAL CONTROLS AND SWITCHES INTENDED TO BE USED BY THE OCCUPANT OF A ROOM OR AREA TO CONTROL LIGHTING AND RECEPTACLE OUTLETS, APPLIANCES OR COOLING, HEATING AND VENTILATING EQUIPMENT SHALL BE LOCATED WITHIN ALLOWABLE REACH RANGES. LOW REACH SHALL BE MEASURED TO THE BOTTOM OF THE OUTLET BOX AND HIGH REACH SHALL BE MEASURED TO THE TOP OF THE OUTLET BOX. §1B-308.1.1

ELECTRICAL RECEPTACLE OUTLETS ON BRANCH CIRCUITS OF 30 AMPERES OR LESS AND COMMUNICATION SYSTEM RECEPTACLES SHALL BE LOCATED WITHIN ALLOWABLE REACH RANGES. LOW REACH SHALL BE MEASURED TO THE BOTTOM OF THE OUTLET BOX AND HIGH REACH SHALL BE MEASURED TO THE TOP OF THE OUTLET BOX. §1B-308.1.2

HIGH FORWARD REACH THAT IS UNOBSTRUCTED SHALL BE 48 INCHES MAXIMUM AND THE LOW FORWARD REACH SHALL BE 15 INCHES MINIMUM ABOVE THE FINISH FLOOR OR GROUND. §1B-308.2.1, FIGURE 1B-308.2.1

HIGH FORWARD REACH SHALL BE 48 INCHES MAXIMUM WHERE THE REACH DEPTH IS 20 INCHES OR LESS AND 44 INCHES MAXIMUM WHERE THE REACH DEPTH EXCEEDS 20 INCHES. HIGH FORWARD REACH SHALL NOT EXCEED 25 INCHES IN DEPTH. §1B-308.2.2, FIGURE 1B-308.2.2

HIGH SIDE REACH SHALL BE 48 INCHES MAXIMUM, AND THE LOW SIDE REACH SHALL BE 15 INCHES MINIMUM ABOVE THE FINISH FLOOR WHERE THE SIDE REACH IS UNOBSTRUCTED, OR THE DEPTH OF ANY OBSTRUCTION DOES NOT EXCEED 10 INCHES. §1B-308.3.1, FIGURE 1B-308.3.1

HIGH SIDE REACH SHALL BE 46 INCHES MAXIMUM ABOVE THE FINISH FLOOR OR GROUND WHERE THE HIGH SIDE REACH IS OVER AN OBSTRUCTION MORE THAN 10 INCHES BUT NOT MORE THAN 24 INCHES IN DEPTH. §1B-308.3.2, FIGURE 1B-

OBSTRUCTIONS FOR HIGH SIDE REACH SHALL NOT EXCEED 34 INCHES IN HEIGHT AND 24 INCHES IN DEPTH. §1B-308.3.2, FIGURE 1B-308.3.2

OBSTRUCTED HIGH SIDE REACH FOR THE TOP OF WASHING MACHINES AND CLOTHES DRYERS SHALL BE PERMITTED TO BE 36 INCHES MAXIMUM ABOVE THE FINISH FLOOR. §1B-308.3.2

OBSTRUCTED HIGH SIDE REACH FOR THE OPERABLE PARTS OF FUEL DISPENSERS SHALL BE PERMITTED TO BE 54 INCHES MAXIMUM MEASURED FROM THE SURFACE OF THE VEHICULAR WAY WHERE FUEL DISPENSERS ARE INSTALLED ON EXISTING CURBS. §1B-308.3.2

OPERABLE PARTS

OPERABLE PARTS SHALL BE OPERABLE WITH ONE HAND AND SHALL NOT REQUIRE TIGHT GRASPING, PINCHING, OR TWISTING OF THE WRIST. FORCE REQUIRED TO ACTIVATE OPERABLE PARTS SHALL BE 5 POUNDS MAXIMUM. §1B-309.4

PLUMBING FIXTURES AND FACILITIES

TOILET AND BATHING ROOM CLEARANCES

DOORS TO UNISEX TOILET ROOMS AND UNISEX BATHING ROOMS SHALL HAVE PRIVACY LATCHES. §1B-213.2.1

MIRRORS LOCATED ABOVE THE LAVATORIES OR COUNTERTOPS SHALL BE INSTALLED WITHIN THE BOTTOM EDGE OF THE REFLECTING SURFACE 40 INCHES MAXIMUM ABOVE THE FINISH FLOOR OR RANGES. MIRRORS NOT LOCATED ABOVE THE LAVATORIES OR COUNTERTOPS SHALL BE INSTALLED WITH THE BOTTOM EDGE OF THE REFLECTING SURFACE 35 INCHES MAXIMUM ABOVE THE FINISH FLOOR OR GROUND. §1B-603.3

COAT HOOKS SHALL BE LOCATED WITHIN ONE OF THE REACH RANGES SPECIFIED IN SECTION 1B-308. SHELVES SHALL BE LOCATED 40 INCHES MINIMUM AND 48 INCHES MAXIMUM ABOVE THE FINISH FLOOR. MEDICINE CABINETS SHALL BE LOCATED WITH A USABLE SHELF NO HIGHER THAN 44 INCHES MAXIMUM ABOVE THE FINISH FLOOR. §1B-603.4

WHERE TOWEL OR SANITARY NAPKIN DISPENSERS, WASTE RECEPTACLES, OR OTHER ACCESSORIES ARE PROVIDED IN TOILET FACILITIES, AT LEAST ONE OF EACH TYPE SHALL BE LOCATED ON AN ACCESSIBLE ROUTE. ALL OPERABLE PARTS, INCLUDING COIN SLOTS, SHALL BE 40 INCHES MAXIMUM ABOVE THE FINISH FLOOR. BABY CHANGING STATIONS ARE NOT REQUIRED TO COMPLY WITH SECTION 1B-603.5 (SEE EXCEPTION) §1B-603.5

WATER CLOSETS AND TOILET COMPARTMENTS

FLUSH CONTROLS SHALL BE HAND OPERATED OR AUTOMATIC. HAND OPERATED FLUSH CONTROLS SHALL COMPLY WITH SECTION 1B-309.4 OPERATION EXCEPT THEY SHALL BE LOCATED 44 INCHES MAXIMUM ABOVE THE FLOOR. FLUSH CONTROLS SHALL BE LOCATED ON THE OPEN SIDE OF THE WATER CLOSET EXCEPT IN AMBULATORY ACCESSIBLE COMPARTMENTS COMPLYING WITH SECTION 1B-604.8.2 AMBULATORY ACCESSIBLE COMPARTMENTS. §1B-604.6

TOILET PAPER DISPENSERS SHALL COMPLY WITH SECTION 1B-309.4 OPERATION AND SHALL BE 7 INCHES MINIMUM AND 9 INCHES MAXIMUM IN FRONT OF THE WATER CLOSET MEASURED TO THE CENTERLINE OF THE DISPENSER. THE OUTLET OF THE DISPENSER SHALL BE BELOW THE GRAB BAR, 19 INCHES MINIMUM ABOVE THE FINISH FLOOR AND SHALL NOT BE LOCATED BEHIND THE GRAB BARS. DISPENSERS SHALL NOT BE OF A TYPE THAT CONTROL DELIVERY OR THAT DOES NOT ALLOW CONTINUOUS PAPER FLOW. §1B-604.7

SANITARY NAPKIN DISPOSAL UNITS, IF PROVIDED, SHALL COMPLY WITH SECTION 1B-309.4 AND SHALL BE WALL MOUNTED AND LOCATED ON THE SIDEWALL BETWEEN THE REAR WALL OF THE TOILET AND THE TOILET PAPER DISPENSER. ADJACENT TO THE TOILET PAPER DISPENSER THE DISPOSAL UNIT SHALL BE LOCATED BELOW THE GRAB BAR WITH THE OPENING OF THE DISPOSAL UNIT 19 INCHES MINIMUM (483 MM) ABOVE THE FINISH FLOOR. §1B-604.7.2

URINALS SHALL BE THE STALL-TYPE OR THE WALL-HUNG TYPE WITH THE RIM 11 INCHES MAXIMUM ABOVE THE FINISH FLOOR OR GROUND. URINALS SHALL BE 13¼ INCHES DEEP MINIMUM MEASURED FROM THE OUTER FACE OF THE URINAL RIM TO THE BACK OF THE FIXTURE. §1B-605.2

FLUSH CONTROLS SHALL BE HAND OPERATED OR AUTOMATIC. HAND OPERATED FLUSH CONTROLS SHALL COMPLY WITH SECTION 1B-309 OPERABLE PARTS EXCEPT THAT THE FLUSH CONTROL SHALL BE MOUNTED AT A MAXIMUM HEIGHT OF 44 INCHES ABOVE THE FINISH FLOOR. §1B-605.

FOR LAVATORIES AND SINKS, A CLEAR FLOOR SPACE COMPLYING WITH SECTION 1B-305 CLEAR FLOOR OR GROUND SURFACES, POSITIONED FOR A FORWARD APPROACH, AND KNEE AND TOE CLEARANCE COMPLYING WITH SECTION 1B-306 KNEE AND TOE CLEARANCE SHALL BE PROVIDED. §1B-606.2

LAVATORIES AND SINKS SHALL BE INSTALLED WITH THE FRONT OF THE HIGHER OF THE RIM OR COUNTER SURFACE 34 INCHES MAXIMUM ABOVE THE FINISH FLOOR OR GROUND. §1B-606.3

SIGNS RELATED TO TOILETS AND BATHING FACILITIES

ENTRANCES LEADING TO TOILET ROOMS AND BATHING ROOMS COMPLYING WITH 1B-603 TOILET AND BATHING ROOMS SHALL BE IDENTIFIED BY A GEOMETRIC SYMBOL COMPLYING WITH 1B-103.1.2.6 TOILET AND BATHING ROOM GEOMETRIC SYMBOLS. WHERE EXISTING TOILET ROOMS OR BATHING ROOMS DO NOT COMPLY WITH 1B-603 TOILET AND BATHING ROOMS, DIRECTIONAL SIGNS INDICATING THE LOCATION OF THE NEAREST COMPLIANT TOILET ROOM OR BATHING ROOM WITHIN THE FACILITY SHALL BE PROVIDED. SIGNS SHALL COMPLY WITH 1B-103.5 VISUAL CHARACTERS AND SHALL INCLUDE THE INTERNATIONAL SYMBOL OF ACCESSIBILITY COMPLYING WITH 1B-103.1.2.1.5A. WHERE EXISTING TOILET ROOMS OR BATHING ROOMS DO NOT COMPLY WITH 1B-603 TOILET AND BATHING ROOMS, THE TOILET ROOMS OR BATHING ROOMS COMPLYING WITH 1B-603 TOILET AND BATHING ROOMS SHALL BE IDENTIFIED BY THE INTERNATIONAL SYMBOL OF ACCESSIBILITY COMPLYING WITH 1B-103.1.2.1.5A. WHERE CLUSTERED SINGLE USER TOILET ROOMS OR BATHING FACILITIES ARE PERMITTED TO USE EXCEPTIONS TO 1B-213.2 TOILET AND BATHING ROOMS, TOILET ROOMS OR BATHING FACILITIES COMPLYING WITH 1B-603 TOILET AND BATHING ROOMS SHALL BE IDENTIFIED BY THE INTERNATIONAL SYMBOL OF ACCESSIBILITY COMPLYING WITH 1B-103.1.2.1.5A UNLESS ALL TOILET ROOMS AND BATHING FACILITIES COMPLY WITH 1B-603 TOILET AND BATHING ROOMS. EXISTING BUILDINGS THAT HAVE BEEN REMODELED TO PROVIDE SPECIFIC TOILET ROOMS OR BATHING ROOMS FOR PUBLIC USE THAT COMPLY WITH THESE BUILDING STANDARDS SHALL HAVE THE LOCATION OF AND THE DIRECTIONS TO THESE ROOMS POSTED IN OR NEAR THE BUILDING LOBBY OR ENTRANCE ON A SIGN COMPLYING WITH 1B-103.5 VISUAL CHARACTERS, INCLUDING THE INTERNATIONAL SYMBOL OF ACCESSIBILITY COMPLYING WITH 1B-103.1.2.1.5A. §1B-213.6

PICTOGRAMS SHALL COMPLY WITH THE FOLLOWING:

- PICTOGRAMS SHALL HAVE A FIELD HEIGHT OF 6 INCHES MINIMUM. CHARACTERS AND BRAILLE SHALL NOT BE LOCATED IN THE PICTOGRAM FIELD. §1B-103.6.1
- PICTOGRAMS AND THEIR FIELD SHALL HAVE A NON-GLARE FINISH. PICTOGRAMS SHALL CONTRAST WITH THEIR FIELD WITH EITHER A LIGHT PICTOGRAM ON A DARK FIELD OR A DARK PICTOGRAM ON A LIGHT FIELD. §1B-103.6.2
- PICTOGRAMS SHALL HAVE TEXT DESCRIPTORS LOCATED DIRECTLY BELOW THE PICTOGRAM FIELD. TEXT DESCRIPTORS SHALL COMPLY WITH 1B-103.2 RAISED CHARACTERS, 1B-103.3 BRAILLE AND 1B-103.4 INSTALLATION HEIGHT AND LOCATION. §1B-103.6.3
- THE INSTALLATION HEIGHT AND LOCATION OF PICTOGRAM SIGNS SHALL BE PER §1B-103.4.1.

SYMBOLS SHALL COMPLY WITH THE FOLLOWING:

- DOORWAYS LEADING TO TOILET ROOMS AND BATHING ROOMS SHALL BE IDENTIFIED BY A GEOMETRIC SYMBOL COMPLYING WITH 1B-103.1.2.6 TOILET AND BATHING FACILITIES GEOMETRIC SYMBOLS. THE SYMBOL SHALL BE MOUNTED AT 58 INCHES MINIMUM AND 60 INCHES MAXIMUM ABOVE THE FINISH FLOOR OR GROUND SURFACE MEASURED FROM THE CENTERLINE OF THE SYMBOL. WHERE A DOOR IS PROVIDED, THE SYMBOL SHALL BE MOUNTED WITHIN 1 INCH OF THE VERTICAL CENTERLINE OF THE DOOR. §1B-103.1.2.6
- A TRIANGLE SYMBOL SHALL BE LOCATED AT ENTRANCES TO MEN'S TOILET AND BATHING FACILITIES, AND IT SHALL BE IDENTIFIED BY AN EQUILATERAL TRIANGLE ¼ INCH THICK WITH EDGES 12 INCHES LONG AND A VERTEX POINTING UPWARD. THE TRIANGLE SYMBOL SHALL CONTRAST WITH THE DOOR EITHER LIGHT ON A DARK BACKGROUND OR DARK ON A LIGHT BACKGROUND. §1B-103.1.2.6.1
- A CIRCLE SYMBOL SHALL BE LOCATED AT ENTRANCES TO WOMEN'S TOILET AND BATHING FACILITIES AND IT SHALL BE IDENTIFIED BY A CIRCLE, ¼ INCH THICK AND 12 INCHES IN DIAMETER. THE CIRCLE SYMBOL SHALL CONTRAST WITH THE DOOR EITHER LIGHT ON A DARK BACKGROUND OR DARK ON A LIGHT BACKGROUND. §1B-103.1.2.6.2
- A COMBINED CIRCLE AND TRIANGLE SYMBOL SHALL BE LOCATED AT ENTRANCES TO UNISEX TOILET AND BATHING FACILITIES AND IT SHALL BE IDENTIFIED BY A CIRCLE, ¼ INCH THICK AND 12 INCHES IN DIAMETER WITH A ¼ INCH THICK TRIANGLE WITH A VERTEX POINTING UPWARD SUPERIMPOSED ON THE CIRCLE AND WITHIN THE 12-INCH DIAMETER. THE TRIANGLE SYMBOL SHALL CONTRAST WITH THE CIRCLE SYMBOL, EITHER LIGHT ON A DARK BACKGROUND OR DARK ON A LIGHT BACKGROUND. THE CIRCLE SYMBOL SHALL CONTRAST WITH THE DOOR EITHER LIGHT ON A DARK BACKGROUND OR DARK ON A LIGHT BACKGROUND. §1B-103.1.2.6.3

THE TOPS OF DINING SURFACES AND WORK SURFACES SHALL BE 28 INCHES MINIMUM AND 34 INCHES MAXIMUM ABOVE THE FINISH FLOOR OR GROUND. §1B-302.3

PREMIER
Design Team

P.O. BOX 5603, DIAMOND BAR, CA 91765, 909.999.8958

4TH CHAMBER
1211 EAST LA HABRA BLVD, SUITE "A"
LA HABRA, CA 90631

CONTRACTOR(S) ON THIS PROJECT ARE RESPONSIBLE FOR REVIEW OF ALL PORTIONS OF THESE CONSTRUCTION DOCUMENTS AND SHALL VERIFY ALL DIMENSIONS AND EXISTING CONDITIONS PRIOR TO SUBMISSION OF BIDS AND/OR DURING ALL PHASES OF CONSTRUCTION. THE CONTRACTOR SHALL NOTIFY THE DESIGNER IMMEDIATELY OF ANY DISCREPANCIES, INCONSISTENCIES OR OMISSIONS PRIOR TO COMMENCEMENT OF ANY WORK, AND AWAIT THE DESIGNER'S CLARIFICATION WHERE APPLICABLE. ALL IDEAS, DESIGNS AND SPECIFICATIONS REPRESENTED BY THESE DRAWINGS AND CONSTRUCTION DOCUMENTS ARE AND SHALL REMAIN THE PROPERTY OF THE DESIGNER AND SHALL NOT BE USED FOR ANY OTHER PROJECT OTHER THAN THE ONE IDENTIFIED HEREIN. NONE OF THESE IDEAS OR DESIGNS SHALL BE USED, NOR REPRODUCED, COPIED, ADAPTED OR DISTRIBUTED, WITHOUT THE WRITTEN PERMISSION OF THE DESIGNER.

DISABLED ACCESSIBILITY REQUIREMENTS

REV.	DATE	DESCRIPTION
DATE	23-164	
JOB NO.		
DRAWN BY	AA	CHECKED BY
SHEET		

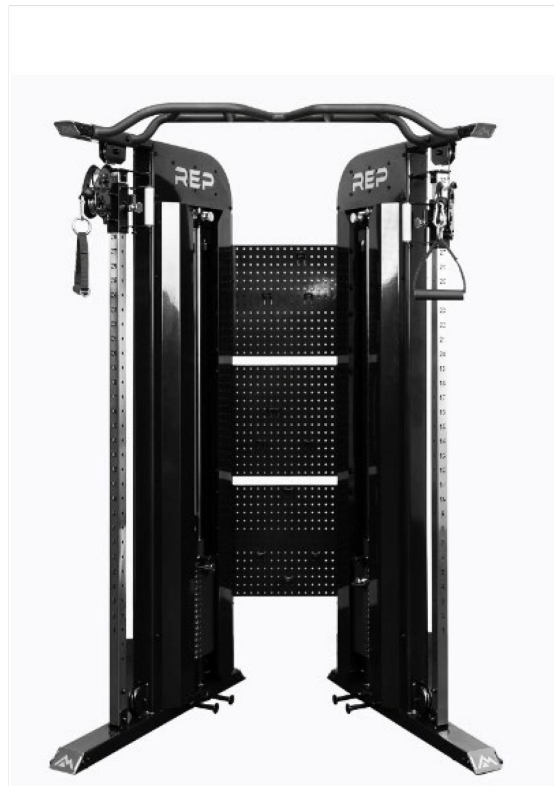
A = 2.6
OF SHEETS



FB-5000 COMPETITION FLAT BENCH



KETTLEBELL STORAGE RACK



ARCADIA FUNCTIONAL TRAINER (CABLE MACHINE)



DUMBBELL RACK

PLATE 1

PLATE 2

PLATE 3

PLATE 4



2 Horizontal Plate Racks



Fitness Assault Air Bike



REP FITNESS Foam Soft Plyo Box



AB-5000 ADJUSTABLE BENCH WITH ZEROG TECHNOLOGY

PLATE 5

PLATE 6

PLATE 7

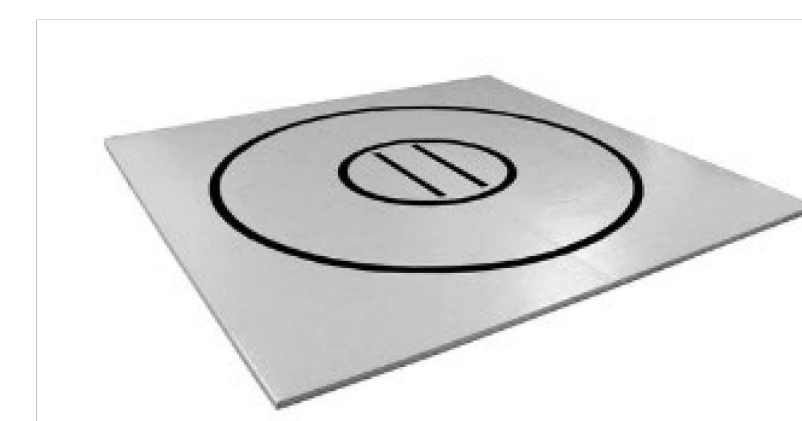
PLATE 8



PR-5000 RACK BUILDER (SQUAT RACK)



HARMONY DX Portable Massage Table



ROLL-UP WRESTLING MAT

PLATE 9

PLATE 10

PLATE 11

PLATE 12

PREMIER
Design Team

P.O. BOX 5603, DIAMOND BAR, CA 91765, 909.999.8958

4TH CHAMBER
1211 EAST LA HABRA BLVD. SUITE "A"
LA HABRA, CA 90631

CONTRACTOR(S) ON THIS PROJECT ARE RESPONSIBLE FOR REVIEW OF ALL PORTIONS OF THESE CONSTRUCTION DOCUMENTS AND SHALL VERIFY ALL DIMENSIONS AND EXISTING CONDITIONS PRIOR TO SUBMISSION OF BIDS AND/OR DURING ALL PHASES OF CONSTRUCTION. THE CONTRACTOR SHALL NOTIFY THE DESIGNER IMMEDIATELY OF ANY DISCREPANCIES, INCONSISTENCIES OR OMISSIONS PRIOR TO COMMENCEMENT OF ANY WORK, AND AWAIT THE DESIGNER'S CLARIFICATION WHERE APPLICABLE. ALL IDEAS, DESIGNS AND SPECIFICATIONS REPRESENTED BY THESE DRAWINGS AND CONSTRUCTION DOCUMENTS ARE AND SHALL REMAIN THE PROPERTY OF THE DESIGNER AND SHALL NOT BE USED FOR ANY OTHER PROJECT OTHER THAN THE ONE IDENTIFIED HEREIN. NONE OF THESE IDEAS OR DESIGNS SHALL BE USED, NOR REPRODUCED, COPIED, ADAPTED OR DISTRIBUTED, WITHOUT THE WRITTEN PERMISSION OF THE DESIGNER.

EQUIPMENT CUT-SHEETS

REV.	DATE	DESCRIPTION
DATE	23-164	
JOB NO.		
DRAWN BY	A.A.	CHECKED BY

SHEET

A=4

OF SHEETS