

3-1-2024

**SIGN PROGRAM FOR MULTI-TENANT BUILDING**

**2120 E. LAMBERT ROAD**

**LA HABRA, CALIFORNIA 92835**

The Property Owner to provide one 18" x 60" x 3" deep sign frame with 1/8" white acrylic faces (non-illuminated) over rental entrance as per elevation drawings.

Also, one 72" x 96" single face multi tenant directory sign located on building facing Lambert Road as per drawing (non-illuminated). Each tenant to have one 14" x 48" white acrylic sign face.

The tenant is responsible for vinyl sign copy. The vinyl to be used is Arlon High Performance Cast Film with an 8 to year life span.

Sign frame to be black enamel paint on .063 aluminum frame for tenant sign and multi-tenant directory sign as per sign drawing.


If tenant moves out, the sign copy to be removed from sign by tenant or landlord (with blank face).

Sign contractor to install signs as per drawings.

If sign is damaged in anyway, the tenant has 30 days to repair or replace sign face at tenant's expense.

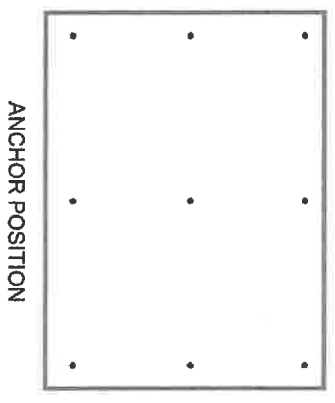
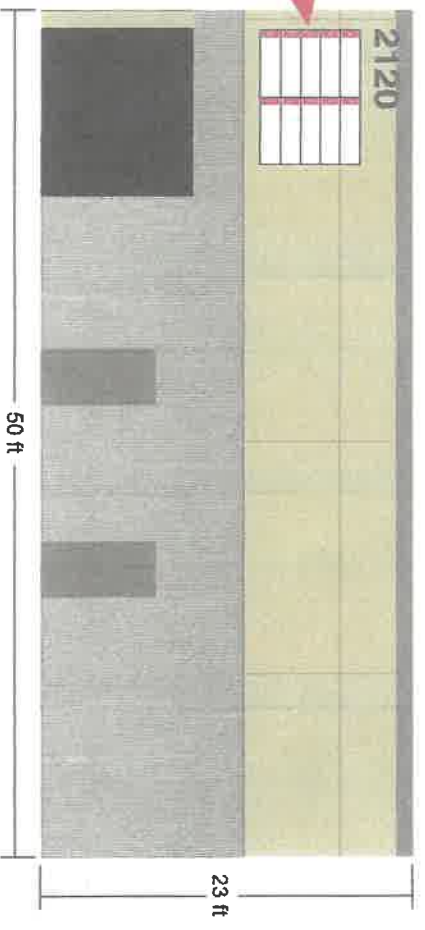
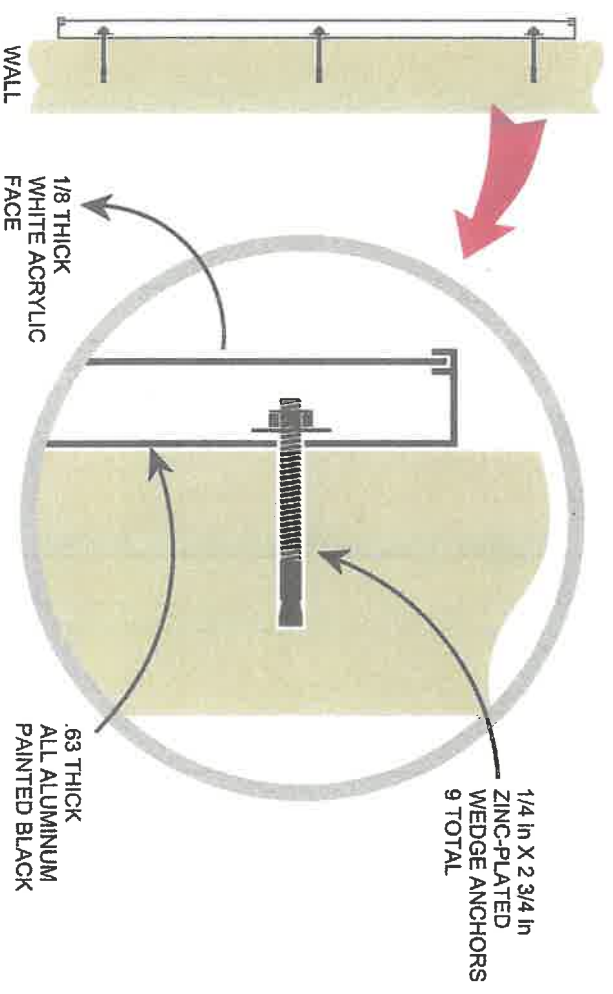
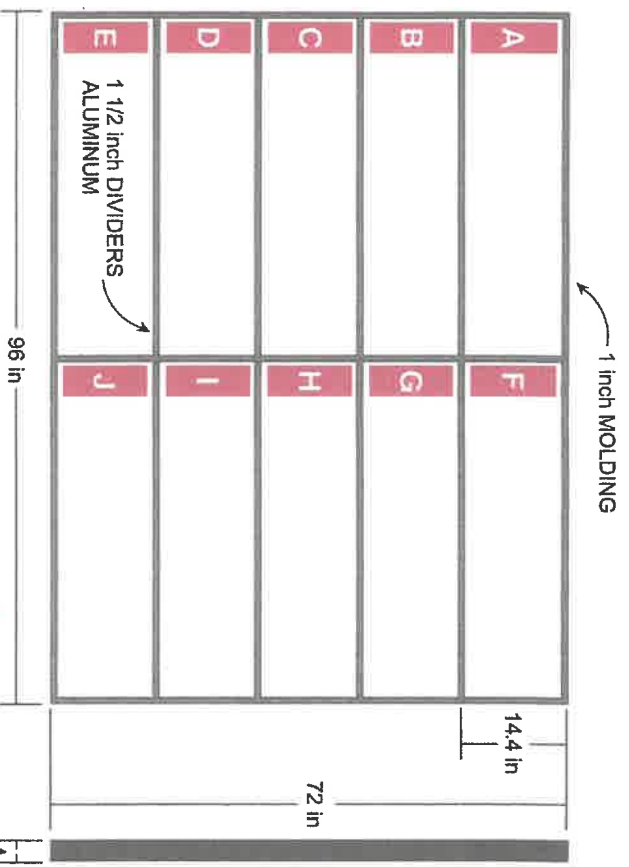
Property Owner

Willie Sahyoun  
921 N. Harbor Blvd., Suite 610  
La Habra, California 90631  
Phone: 626-688-8080

*Willie Sahyoun*  
  
*3/5/2024*

Sign Contractor

William Hormuth  
310 Paseo Sonrisa  
Walnut, California 91789  
Phone: 909-598-7366  
License #: 566692 C45

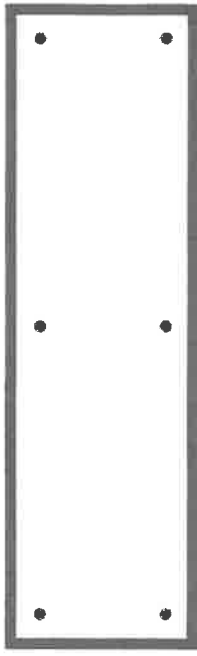


**K & B Sign Inc.** Lic # 566692 C45  
 310 Paseo Sonrisa, Walnut, CA 91789  
 909-598-7366

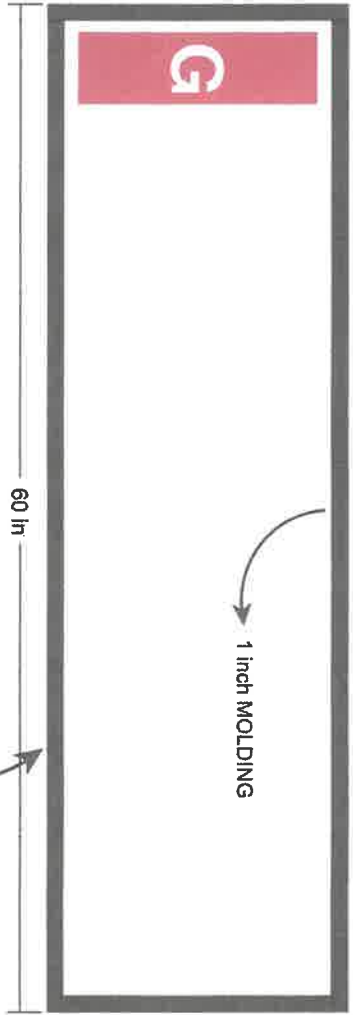
**NON-ILLUMINATED DIRECTORY SIGN**

PROPOSE DIRECTORY SIGN FOR  
 AT 2120 E. LAMBERT RD  
 LA HABRA, CA 90631

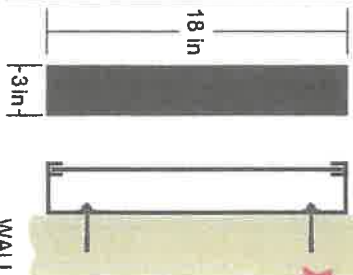
*Wael S. Hassan*  
 3/5/2024



ANCHOR POSITION

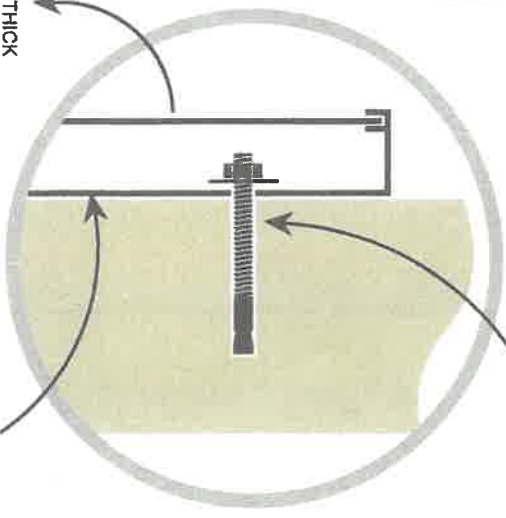


1 inch MOLDING



WALL

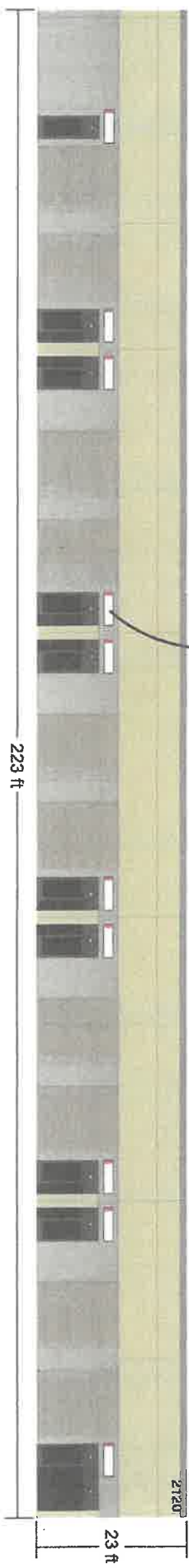
1/8 THICK WHITE ACRYLIC FACE



1/4 in X 2 3/4 in ZINC-PLATED WEDGE ANCHORS 6 TOTAL

63 THICK ALL ALUMINUM PAINTED BLACK

\* A THRU J TOTAL 10 INDIVIDUAL STORE SIGNS



**K & B Sign Inc.** Lic # 566692 C45  
 310 Paseo Sornisa, Walnut, CA 91789  
 909-598-7366

**NON-ILLUMINATED STORE FRONT SIGN**

PROPOSE DIRECTORY SIGN FOR  
 AT 2120 E. LAMBERT RD  
 LA HABRA, CA 90631

*Wael Sakhyeen*  
*3/5/2024*



S. PALM ST

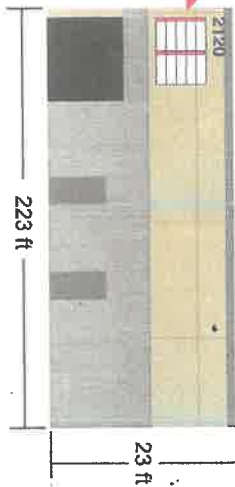
E. LAMBERT RD



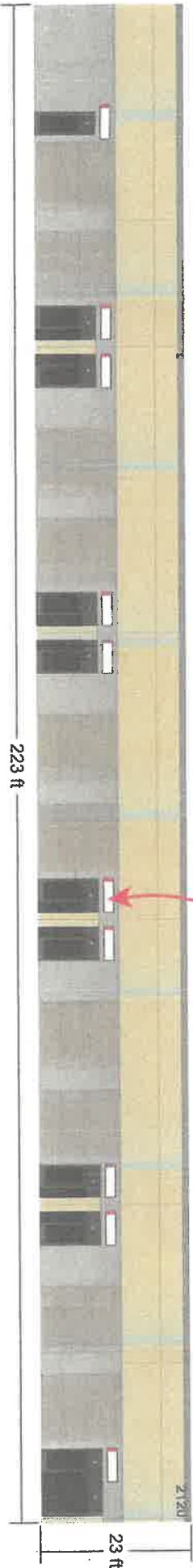
A	F
B	G
C	H
D	I
E	J



\* A THRU J TOTAL 10 INDIVIDUAL STORE SIGNS



NORTH ELEVATION



EAST ELEVATION

**K & B Sign Inc.** Lic # 566692 C45  
310 Paseo, Sonoma, Walnut, CA 91789  
909-598-7366

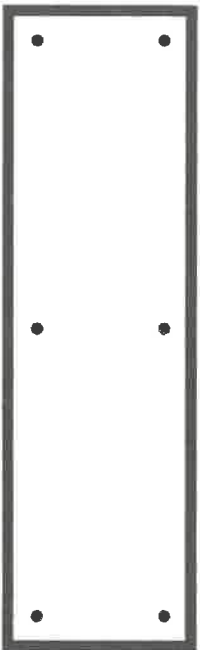
**PLOT PLAN**

PROPOSE DIRECTORY SIGN FOR:  
AT 2120 E. LAMBERT RD  
LA HABRA, CA 90631

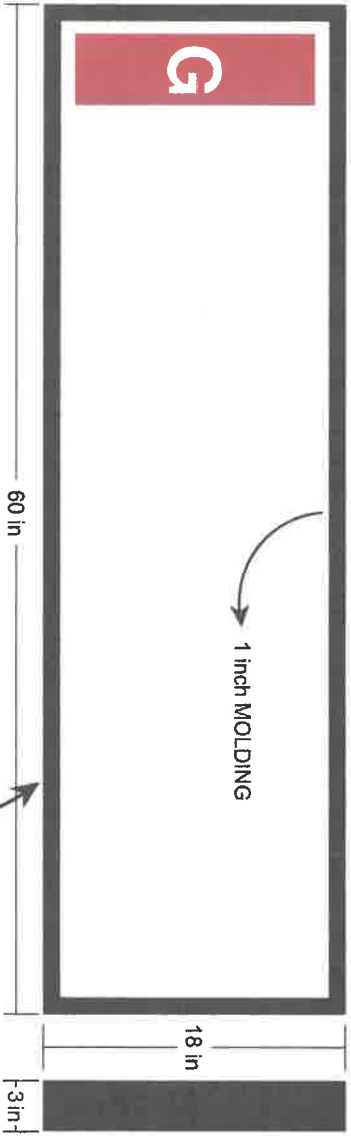
*Willie Sakyun*

*2/6/2024*

*Orange Property Management*



ANCHOR POSITION



1 inch MOLDING

18 in

3 in

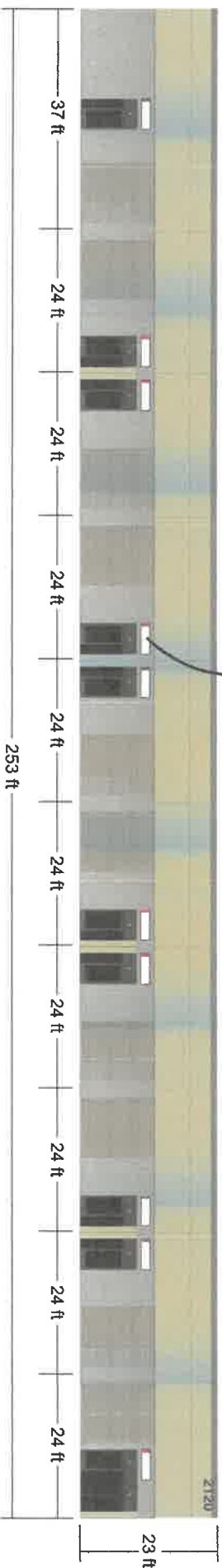
WALL

1/8 THICK  
WHITE ACRYLIC  
FACE

.63 THICK  
ALL ALUMINUM  
PAINTED BLACK

1/4 in X 2 3/4 in  
ZINC-PLATED  
WEDGE ANCHORS  
6 TOTAL

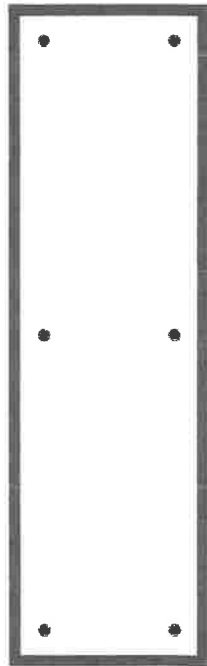
\* A THRU J TOTAL 10 INDIVIDUAL STORE SIGNS



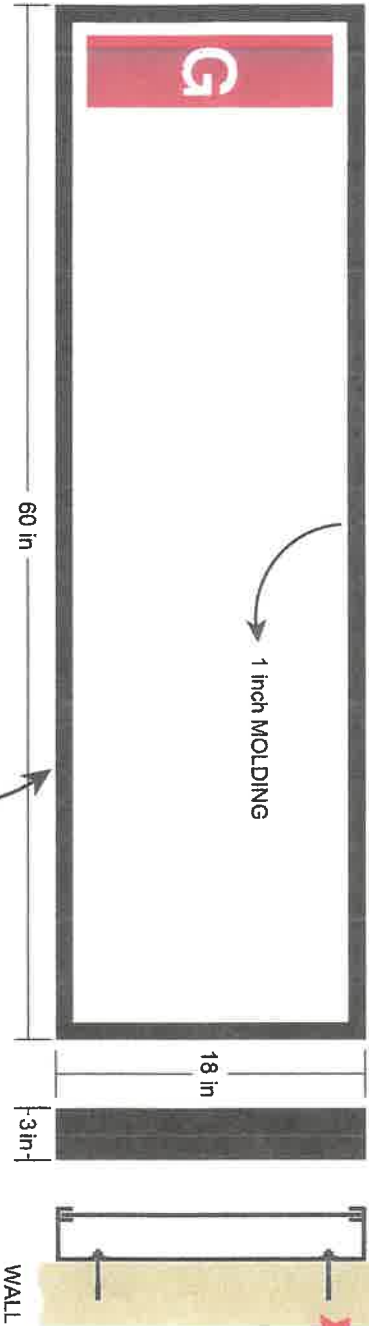
**K & B Sign Inc.** Lic # 566692 C45  
310 Paseo Sonrisa, Walnut, CA 91789  
909-598-7366

**NON-ILLUMINATED STORE FRONT SIGN**

PROPOSE DIRECTORY SIGN FOR  
AT 2120 E. LAMBERT RD  
LA HABRA, CA 90631



ANCHOR POSITION



1 inch MOLDING

18 in

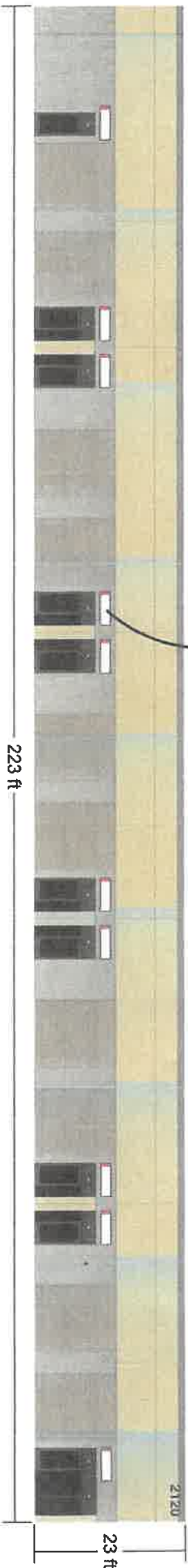
3 in

WALL

1/8 THICK  
WHITE ACRYLIC  
FACE

.63 THICK  
ALL ALUMINUM  
PAINTED BLACK

1/4 in X 2 3/4 in  
ZINC-PLATED  
WEDGE ANCHORS  
6 TOTAL



\* A THRU J TOTAL 10 INDIVIDUAL STORE SIGNS

223 ft

23 ft

2120

**K & B Sign Inc.** Lic # 566692 C45  
310 Paseo Sonrisa, Walnut, CA 91789  
909-598-7366

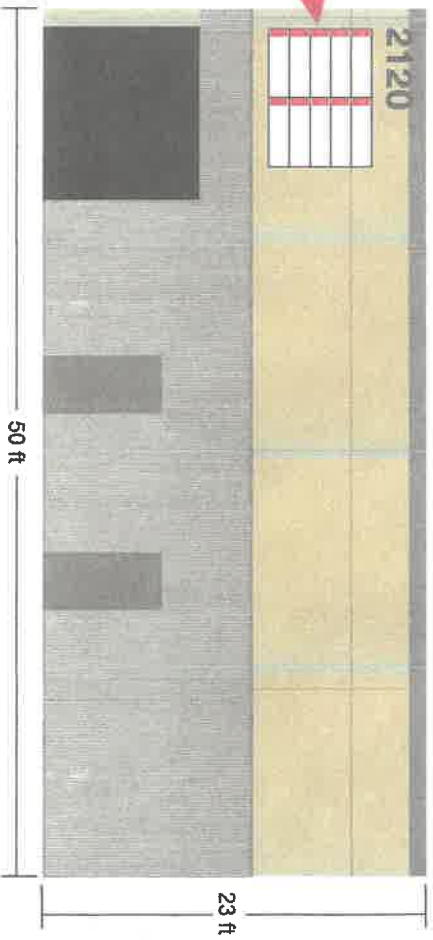
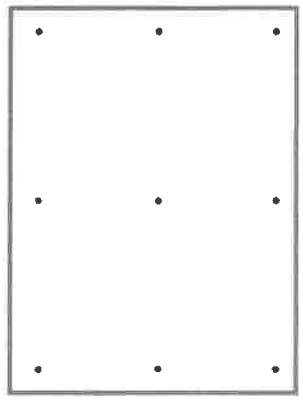
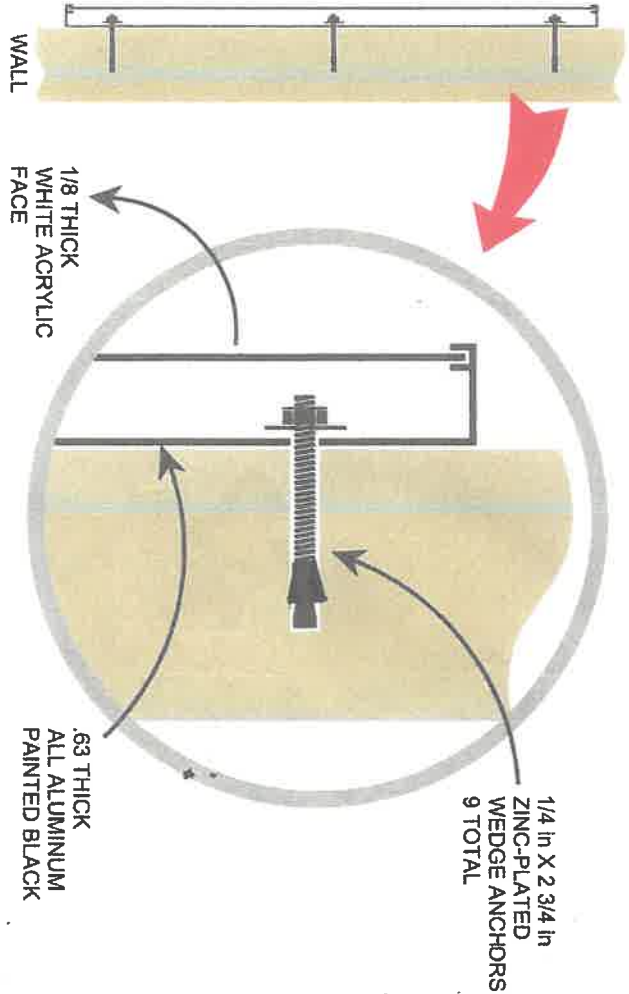
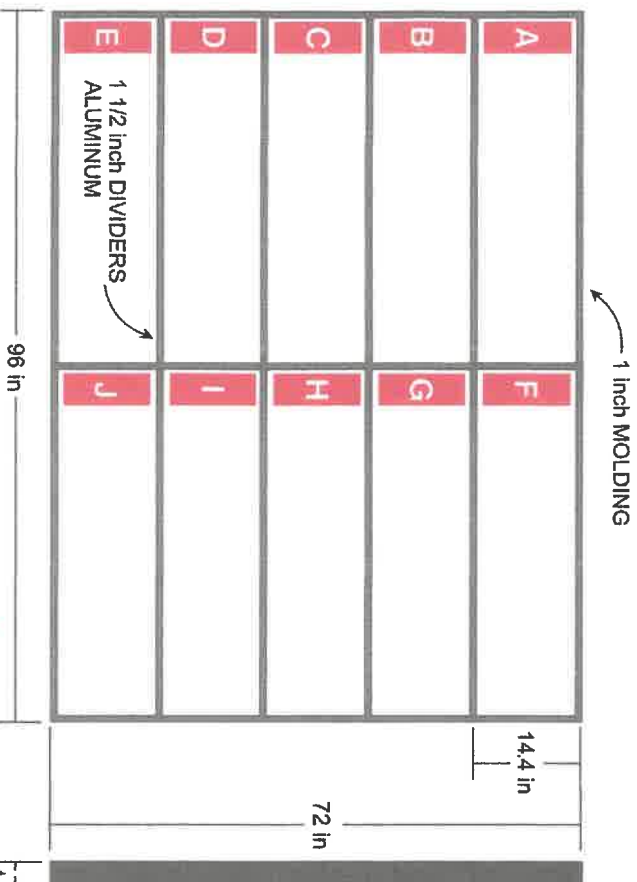
**NON-ILLUMINATED STORE FRONT SIGN**

PROPOSE DIRECTORY SIGN FOR  
AT 2120 E. LAMBERT RD  
LA HABRA, CA 90631

*Willie Sahyan*

*2/6/2024*

*Orange Property Management*



*B. Williams*

**K & B Sign Inc.** Lic # 566692 C45  
 310 Paseo Sonrisa. Walnut, CA 91789  
 909-598-7366

**NON-ILLUMINATED DIRECTORY SIGN**

PROPOSE DIRECTORY SIGN FOR  
 AT 2120 E. LAMBERT RD.  
 LA HABRA, CA 90631

*Willie Sahyoun*

*2/6/2024*

*Orange Property Management*

# PREMIUM CAST TRANSLUCENT FILM

LIGH



## SERIES 2500/2550/2570 Cast Translucent Film

	<b>2037</b> Yellow †		<b>143</b> Poppy Red		<b>59</b> Dark Brown		<b>2940</b> Blue †		<b>4028</b> Green
	<b>15</b> Yellow ▼		<b>43</b> Light Tomato Red		<b>69</b> Duranodic		<b>36</b> Dark Blue ▼		<b>76</b> Holly Green ▼
	<b>1090</b> Yellow †		<b>83</b> Regal Red		<b>22</b> Black ▼		<b>2114</b> Blue		<b>2108</b> Green
	<b>525</b> Bright Yellow		<b>31</b> Red ▼		<b>57</b> Olympic Blue		<b>87</b> Royal Blue ▼		<b>112</b> Olive Green
	<b>125</b> Golden Yellow		<b>2510</b> Red †		<b>337</b> Process Blue		<b>236</b> Turquoise		<b>51</b> Silver Gray
	<b>25</b> Sunflower		<b>73</b> Dark Red ▼		<b>127</b> Intense Blue		<b>103</b> Dark Teal		<b>71</b> Shadow Gray
	<b>169</b> Marigold		<b>253</b> Cardinal Red		<b>2930</b> Blue †		<b>246</b> Teal		<b>10</b> White ▼
	<b>84</b> Tangerine		<b>2283</b> Red †		<b>67</b> Bright Blue ▼		<b>307</b> Dark Aqua		<b>5</b> Gray
	<b>2119</b> Orange †		<b>49</b> Burgundy		<b>2051</b> Blue †		<b>106</b> Brilliant Green		<b>31</b> Gold Metallic
	<b>44</b> Orange		<b>78</b> Vivid Rose		<b>97</b> Bristol Blue		<b>2586</b> Green		
	<b>244</b> Orange Crush		<b>133</b> Raspberry		<b>157</b> Sultan Blue ▼		<b>146</b> Lt. Kelly Green		
	<b>2662</b> Red †		<b>128</b> Plum		<b>2870</b> Blue †		<b>156</b> Vivid Green		
	<b>415</b> Fire Red		<b>63</b> Rust Brown		<b>557</b> Imperial Blue		<b>26</b> Green		

### SERI Diffu

- Designa
- Internal
- Available
- 7 year o

- Diffused
- Soft
- Dispers
- 7 años d

### SERI Bloc

- Ideal for
- signage
- light tra
- Excellent
- Ultimate
- Superior
- Custom
- 5 year o

- Ideal for
- signage
- light tra
- Excellent
- Ultimate
- Superior
- Custom
- 5 year o

### SERI Dual

- Allows i
- 25%
- 25%
- Available
- Custom
- 5 year o

- Superior
- Ultimate
- Superior
- Custom
- 5 year o



*Abel Salayon*  
3/5/2024

- 61 Colors
- Excellent for thermoforming
- 7 year outdoor durability for bright and vivid colors, even on the most demanding applications
- 2-mil cast vinyl with permanent adhesive

NOTE: For extended film warranties and custom color requests, contact Arlon Customer Service at: 1.800.232.7161

- 61 colores
- Excelente para termofonnado
- 7 años de durabilidad en exteriores con colores brillantes y vibrantes, hasta en las aplicaciones más exigentes
- Vinilo fundido de 2-mil, premium con adhesivo permanente

AVISO: para solicitudes de garantía prolongada de la película y colores especiales, póngase en contacto con su representante de ventas local

## SERIES 2500SL Cast Translucent Film

- Series 2500 with synthetic liner, 48" only
- Supports high volume wet applications
- 7 year outdoor durability
- Serie 2500 con respaldo sintético, sólo en 48"
- Soporta la producción en aplicaciones húmedas de alto volumen
- 7 años de duración en exteriores

F00  
Aron...  
to be used...  
manufacture  
• Includes  
• Includes  
and 48"  
▼ 48" only  
• Includes an  
• Includes an  
▼ 48" only



2120

2120

TENANT  
PARKING ONLY

SK  
SKI  
BLANKET  
RENTALS  
UNIKOS USA