



FOOD MARKET
La Habra - CA

Location:
Imperial Hwy. & S. Harbor Blvd.
La Habra, CA 90631

Client Approval: _____

Date of Approval: _____

Sales Rep:
Mark C.

Date: 09-21-15 Drawn by: Mike M.

1	02-10-16	MM
2	06-01-16	MM
3		
4		
5		
6		

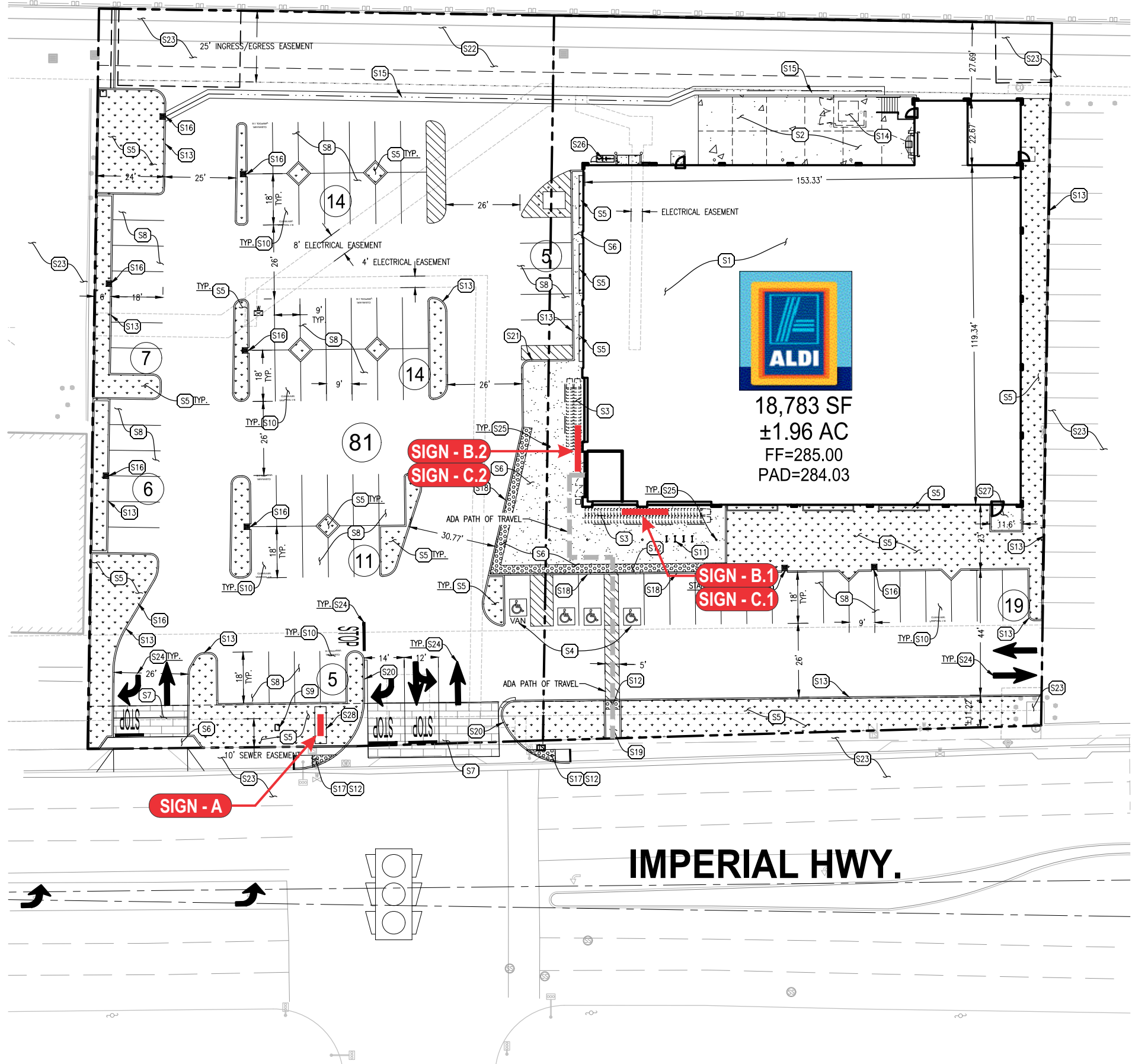
Electrical Requirement:
 120 Volts 277 Volts



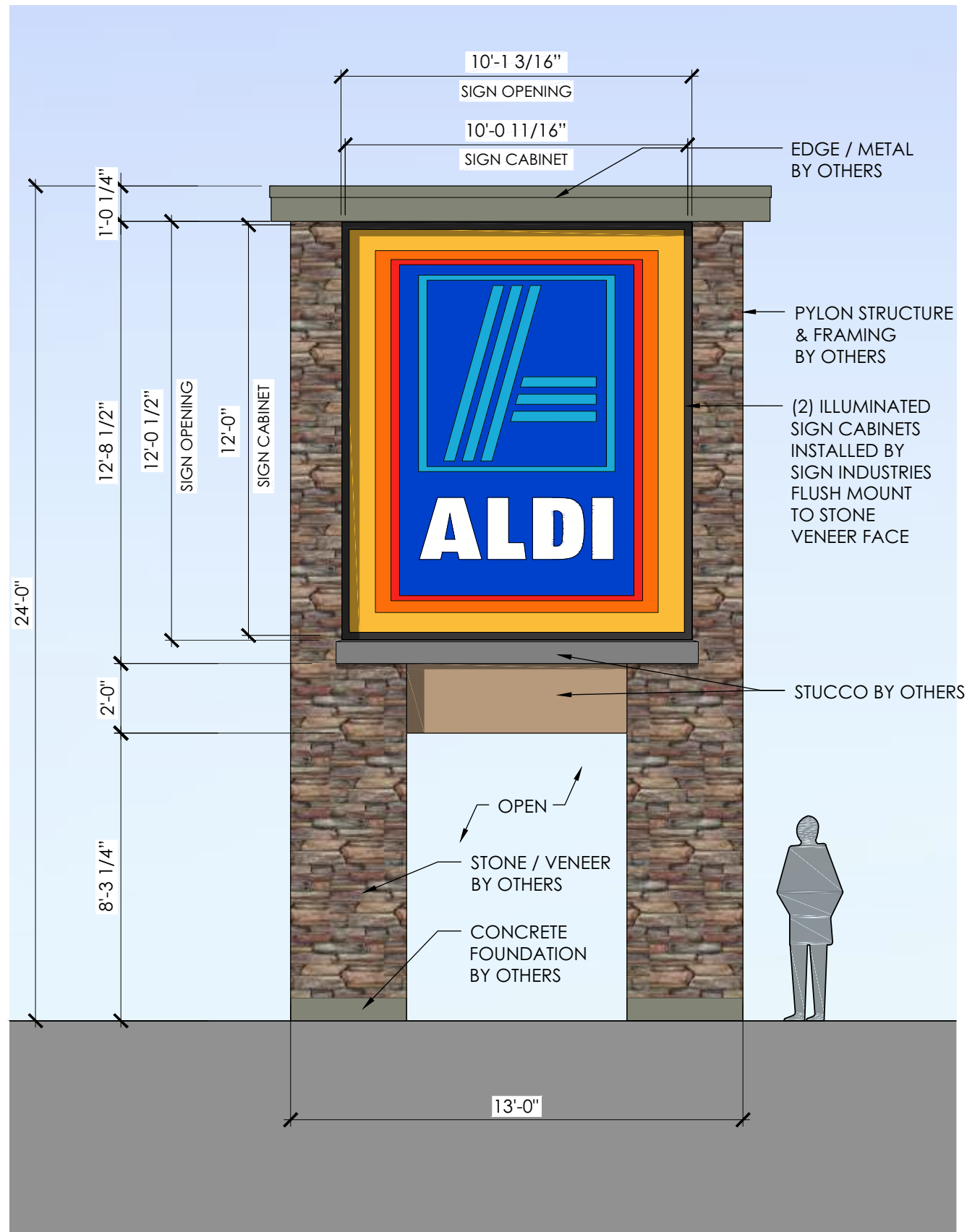
2101 Carrillo Privado, Ontario, CA 91761
 (909) 930-0303 Fax: (909) 930-0308
 E-mail: design@signindustries.tv
 Web: www.signindustries.tv

All ideas, plans or arrangements indicated on this drawing are copyrighted and owned by Sign Industries Incorporated and shall not be reproduced, used by or disclosed to any persons, firm or corporation for any purpose whatsoever without written permission of Sign Industries Incorporated.

Drawing No
15-353

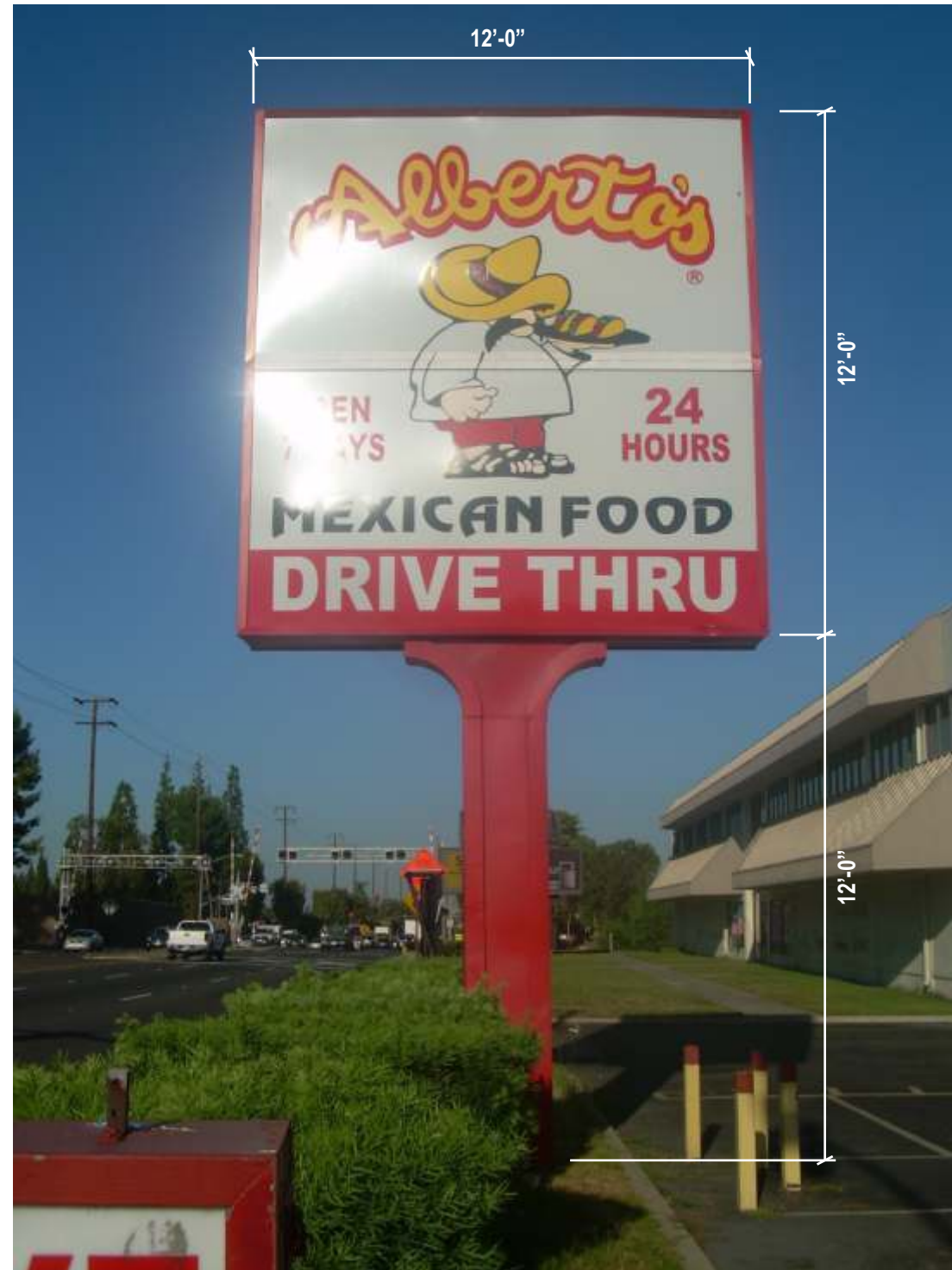


IMPERIAL HWY.



SIGN - A NEW ILLUMINATED DOBLE SIDED PYLON SIGN
Scale: 1/4" = 1'-0"

SIGN AREA = 120.70 SQ. FT.



EXISTING DOUBLE SIDED POLE SIGN TO BE REMOVED

SIGN AREA = 144.00 SQ. FT.

Project:



FOOD MARKET
La Habra - CA

Location:
Imperial Hwy. & S. Harbor Blvd.
La Habra, CA 90631

Client Approval:

Date of Approval:

Sales Rep:
Mark C.

Date: 09-21-15 Drawn by: Mike M.

1	02-10-16	MM
2	06-01-16	MM
3		
4		
5		
6		

Electrical Requirement:

120 Volts 277 Volts



2101 Carrillo Privado, Ontario, CA 91761
(909) 930-0303 Fax: (909) 930-0308
E-mail: design@signindustries.tv
Web: www.signindustries.tv

All ideas, plans or arrangements indicated on this drawing are copyrighted and owned by Sign Industries Incorporated and shall not be reproduced, used by or disclosed to any persons, firm or corporation for any purpose whatsoever without written permission of Sign Industries Incorporated.

Drawing No

15-353



Page: **2**



FOOD MARKET

La Habra - CA

Location:
Imperial Hwy. & S. Harbor Blvd.
La Habra, CA 90631

Client Approval:

Date of Approval:

Sales Rep:
Mark C.

Date: 09-21-15 Drawn by: Mike M.

Item	Date	By
1	02-10-16	MM
2	06-01-16	MM
3		
4		
5		
6		

Electrical Requirement:

120 Volts 277 Volts



2101 Carrillo Privado, Ontario, CA 91761
(909) 930-0303 Fax: (909) 930-0308
E-mail: design@signindustries.tv
Web: www.signindustries.tv

All ideas, plans or arrangements indicated on this drawing are copyrighted and owned by Sign Industries Incorporated and shall not be reproduced, used by or disclosed to any persons, firm or corporation for any purpose whatsoever without written permission of Sign Industries Incorporated.

Drawing No

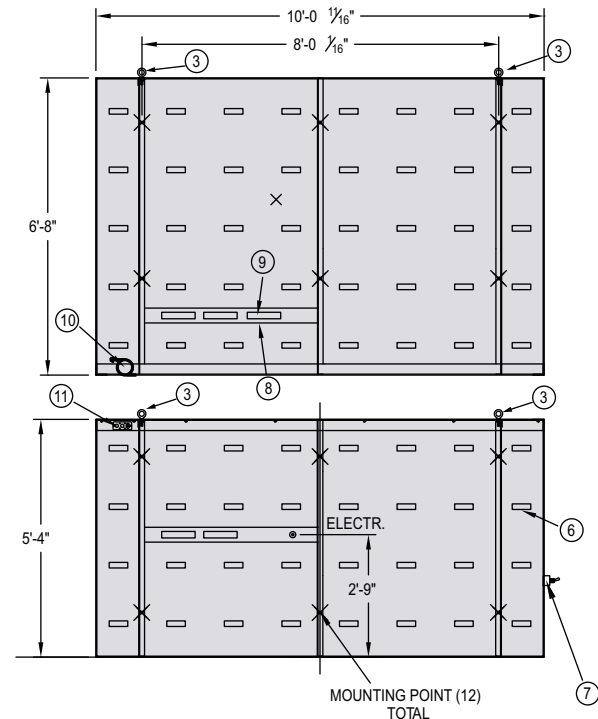
15-353



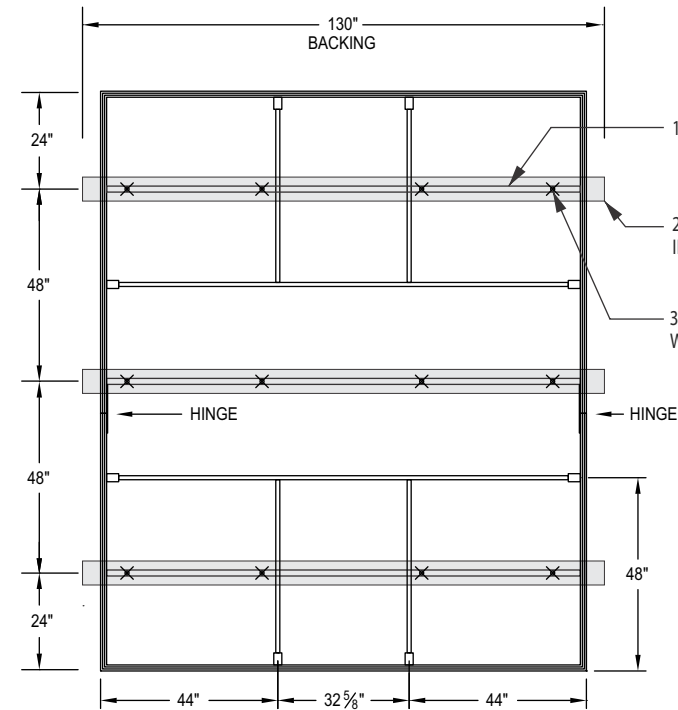
Page: 3



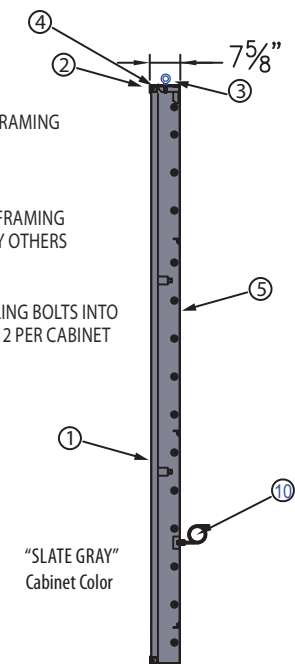
SIGN - A NEW SIGN LOGO CABINET (QTY.-2)
Scale: 1/4" = 1'-0"



ELECTRICAL
Scale: 1/4" = 1'-0"



FLEX FRAME
Scale: 1/4" = 1'-0"



SECTION VIEW
Scale: 1/4" = 1'-0"

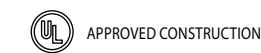
MATERIAL LIST	
ITEM	DESCRIPTION
1	FLEXIBLE SUBSTRATE W/1ST. SURFACE GRAPHICS
2	BREAK BENT ALUM. RETAINER PAINTED SLATE GRAY
3	LIFTING EYE BOLTS
4	FSC EXTRUSION FINISH SLATE GRAY WITH ROUTED OUT BACK LIP
5	WHITE ALUM. BACK
6	LED MODULE
7	TOGGLE DISCONNECT SWITCH
8	FSC ALUM. LIGHT TRACK
9	60W POWER SUPPLY
10	GREENFIELD
11	ELECTRICAL BOX TO CONNECT BOTH SECTIONS
12	SEALTIGHT WITH CONNECTOR

GRAPHIC	
ITEM	DESCRIPTION
A	PMS 1235 C YELLOW-OUTSIDE BORDER
B	PMS 021 C ORANGE-MIDDLE BORDER
C	PMS WARM RED C-INSIDE BORDER
D	PMS 287 C DARK BLUE-BACKGROUND
E	PMS 638 C LIGHT BLUE-LOGO
F	WHITE-"ALDI" COPY

ELECTRICAL SPECS						
ITEM	QTY	DESCRIPTION	VOLTS	AMPS	WATTS	CIRCUITS
			120	5	600	1

ALDI CORPORATE COLOR SCHEME

DIGITAL PRINT COLOR MATCHING



THIS SIGN IS INTENDED TO BE INSTALLED IN ACCORDANCE WITH THE REQUIREMENTS OF ARTICLE 600 OF NEC AND/OR OTHER APPLICABLE LOCAL CODES. THIS INCLUDES PROPER GROUNDING AND BONDING OF THE SIGN

Project:



FOOD MARKET
La Habra - CA

Location:
Imperial Hwy. & S. Harbor Blvd.
La Habra, CA 90631

Client Approval:

Date of Approval:

Sales Rep:
Mark C.

Date: 09-21-15 Drawn by: Mike M.

1	02-10-16	MM
2	06-01-16	MM
3		
4		
5		
6		

Electrical Requirement:
 120 Volts 277 Volts



2101 Carrillo Privado, Ontario, CA 91761
(909) 930-0303 Fax: (909) 930-0308
E-mail: design@signindustries.tv
Web: www.signindustries.tv

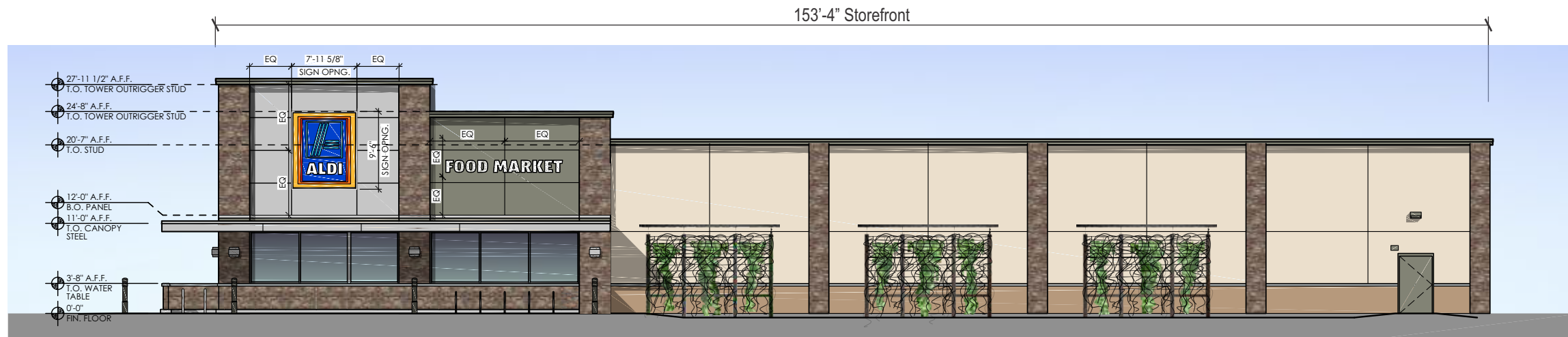
All ideas, plans or arrangements indicated on this drawing are copyrighted and owned by Sign Industries Incorporated and shall not be reproduced, used by or disclosed to any persons, firm or corporation for any purpose whatsoever without written permission of Sign Industries Incorporated.

Drawing No

15-353



Page: **4**



PROPOSED BUILDING STOREFRONT ELEVATION: SOUTH SIDE

Scale: 1/16" = 1'-0"

SIGN TYPE	DESCRIPTION	QTY.	SIGN SIZE	SQ. FT. PER SIGN	SQ. FT. SUB-TOTAL
B.1	LOGO SIGN	1	7'-11 1/8"(w) x 9'-5 1/2"(h)	74.9	74.9
C.1	LETTERS SIGN	1	14'-3 1/8"(w) x 1'-6"(h)	21.4	21.4
TOTAL SIGNAGE AREA					96.3



ENLARGED BUILDING ELEVATION: SOUTH SIDE

Scale: 1/8" = 1'-0"

Project:



FOOD MARKET
La Habra - CA

Location:
Imperial Hwy. & S. Harbor Blvd.
La Habra, CA 90631

Client Approval:

Date of Approval:

Sales Rep:

Mark C.

Date: 09-21-15 Drawn by: Mike M.

1	02-10-16	MM
2	06-01-16	MM
3		
4		
5		
6		

Electrical Requirement:

120 Volts 277 Volts



2101 Carrillo Privado, Ontario, CA 91761
(909) 930-0303 Fax: (909) 930-0308
E-mail: design@signindustries.tv
Web: www.signindustries.tv

All ideas, plans or arrangements indicated on this drawing are copyrighted and owned by Sign Industries Incorporated and shall not be reproduced, used by or disclosed to any persons, firm or corporation for any purpose whatsoever without written permission of Sign Industries Incorporated.

Drawing No

15-353



Page: **5**



PROPOSED BUILDING ELEVATION: WEST SIDE

Scale: 1/16" = 1'-0"

SIGN TYPE	DESCRIPTION	QTY.	SIGN SIZE	SQ. FT. PER SIGN	SQ. FT. SUB-TOTAL
B.2	LOGO SIGN	1	7'-11 1/8"(w) x 9'-5 1/2"(h)	74.9	74.9
C.2	LETTERS SIGN	1	14'-3 1/8"(w) x 1'-6"(h)	21.4	21.4
TOTAL SIGNAGE AREA					96.3



ENLARGED BUILDING ELEVATION: WEST SIDE

Scale: 1/8" = 1'-0"



FOOD MARKET
La Habra - CA

Location:
Imperial Hwy. & S. Harbor Blvd.
La Habra, CA 90631

Client Approval:

Date of Approval:

Sales Rep:
Mark C.

Date: 09-21-15
Drawn by: Mike M.

1	02-10-16	MM
2	06-01-16	MM
3		
4		
5		
6		

Electrical Requirement:
 120 Volts 277 Volts



2101 Carrillo Privado, Ontario, CA 91761
(909) 930-0303 Fax: (909) 930-0308
E-mail: design@signindustries.tv
Web: www.signindustries.tv

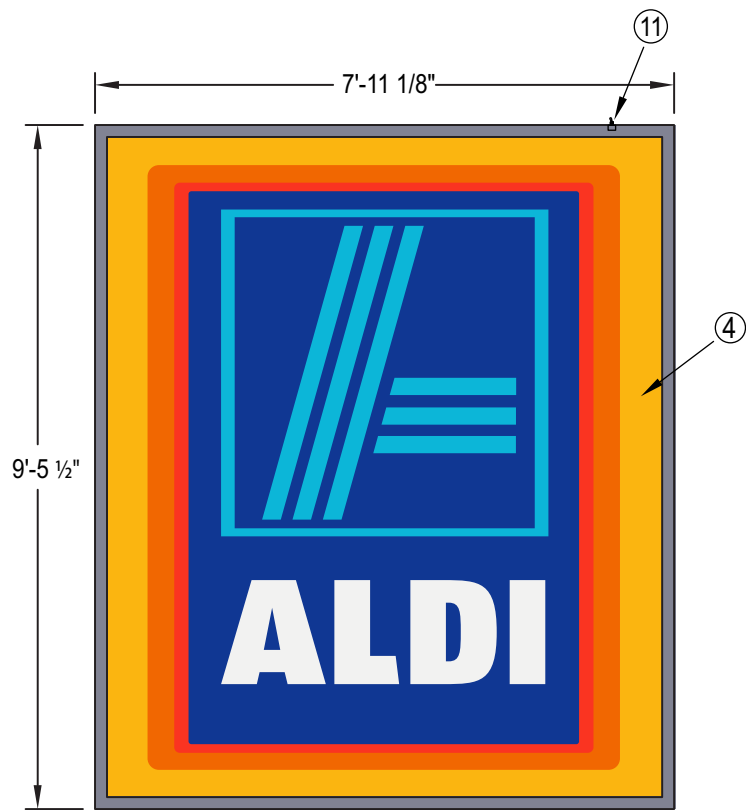
All ideas, plans or arrangements indicated on this drawing are copyrighted and owned by Sign Industries Incorporated and shall not be reproduced, used by or disclosed to any persons, firm or corporation for any purpose whatsoever without written permission of Sign Industries Incorporated.

Drawing No

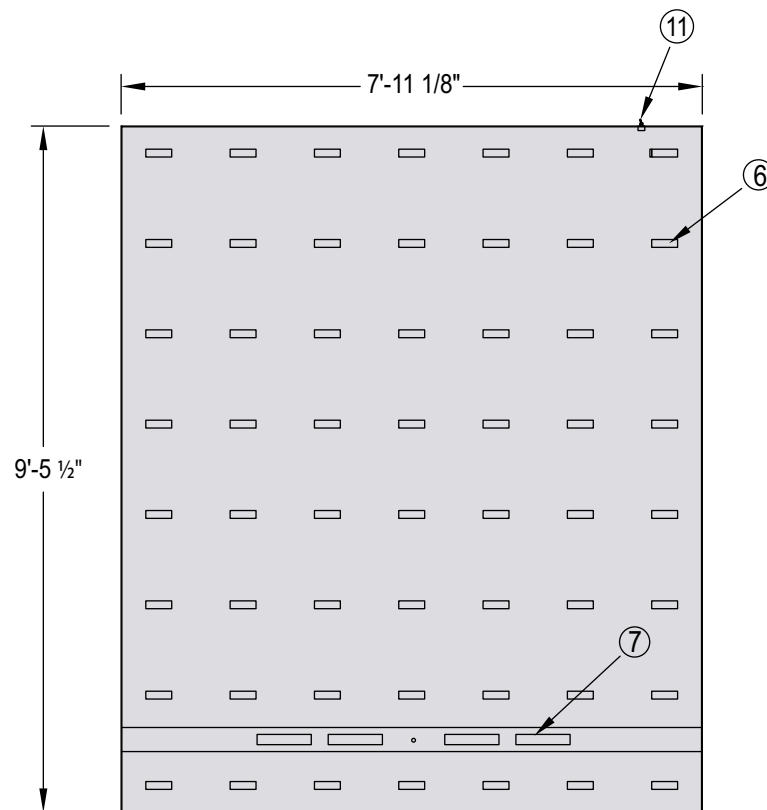
15-353



Page: **6**



GRAPHIC

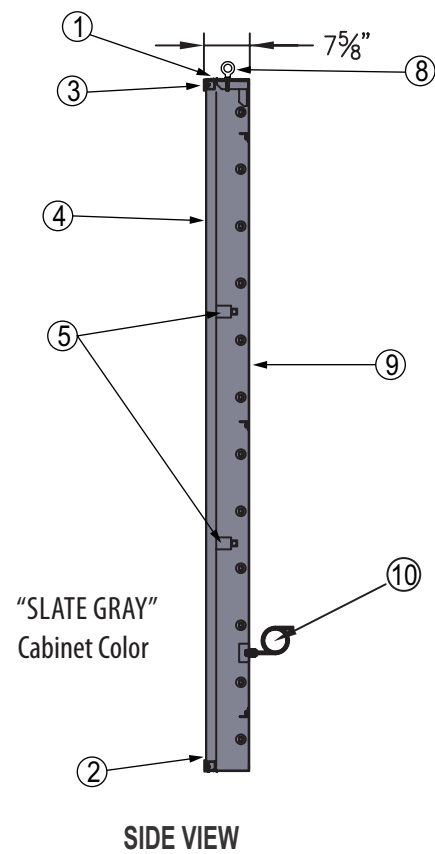


ELECTRICAL

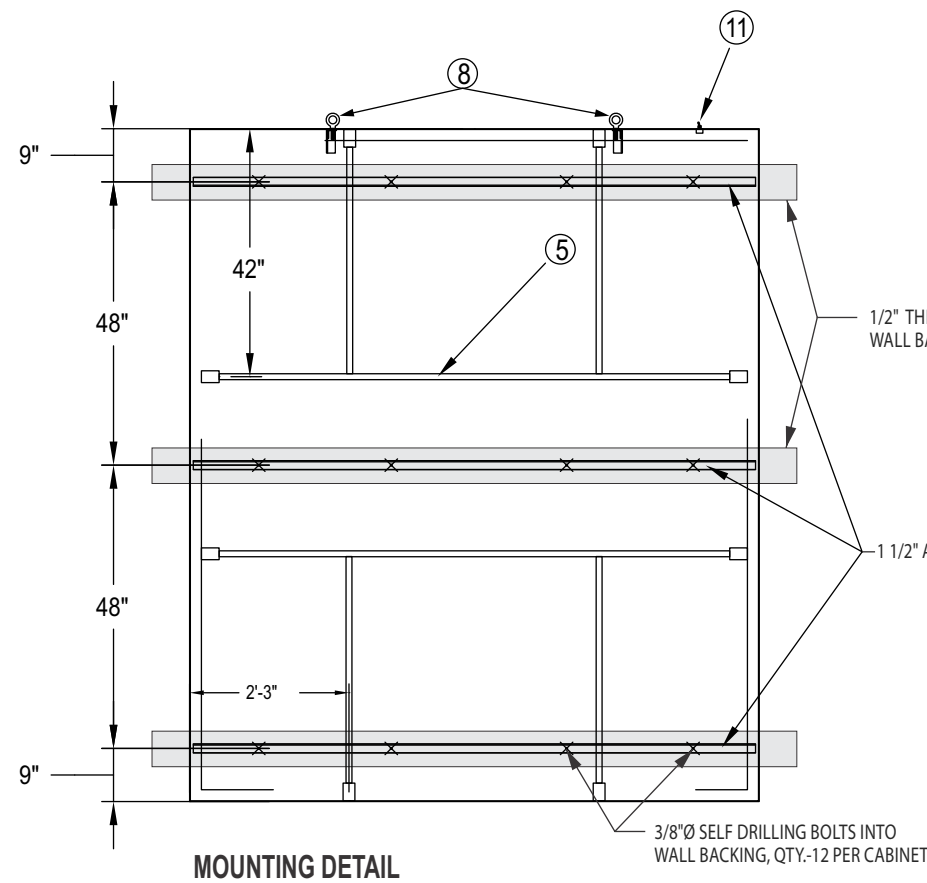
MATERIAL LIST	
ITEM	DESCRIPTION
1	FSC EXTRUSION FINISH SLATE GRAY
2	FLEX FACE ALUM. EXTRUSION
3	BREAK BENT ALUM. RETAINER PAINTED SLATE GRAY
4	FLEXIBLE SUBSTRATE W/1ST. SURFACE GRAPHICS
5	SQ. ALUM. TUBE FOR FACE SUPPORT
6	LED MODULE
7	60W POWER SUPPLY
8	LIFTING EYE BOLTS
9	WHITE ALUM. SIGN BACK
10	ELECTRICAL PIGTAIL W/CONNECTOR
11	TOGGLE SWITCH ASSY. W/ COVER

GRAPHIC	
ITEM	DESCRIPTION
A	PMS 1235 C YELLOW-OUTSIDE BORDER
B	PMS 021 C ORANGE-MIDDLE BORDER
C	PMS WARM RED C-INSIDE BORDER
D	PMS 287 C DARK BLUE-BACKGROUND
E	PMS 638 C LIGHT BLUE-LOGO
F	WHITE-"ALDI" COPY

ELECTRICAL SPECS					
ITEM	QTY	DESCRIPTION			
		VOLTS	AMPS	WATTS	CIRCUITS
		120	3.64	437	1



SIDE VIEW



MOUNTING DETAIL

UL APPROVED CONSTRUCTION
REMEMBER DRAIN HOLES (EXTERIOR SIGNS ONLY)

THIS SIGN IS INTENDED TO BE INSTALLED IN ACCORDANCE WITH THE REQUIREMENTS OF ARTICLE 600 OF NEC AND/OR OTHER APPLICABLE LOCAL CODES. THIS INCLUDES PROPER GROUNDING AND BONDING OF THE SIGN

ALDI CORPORATE COLOR SCHEME

DIGITAL PRINT COLOR MATCHING

PMS #1235	PMS #021	PMS Warm Red	PMS #287	PMS #638	3M 3630-51 (PMS #430)

Project:



FOOD MARKET
La Habra - CA

Location:
Imperial Hwy. & S. Harbor Blvd.
La Habra, CA 90631

Client Approval:

Date of Approval:

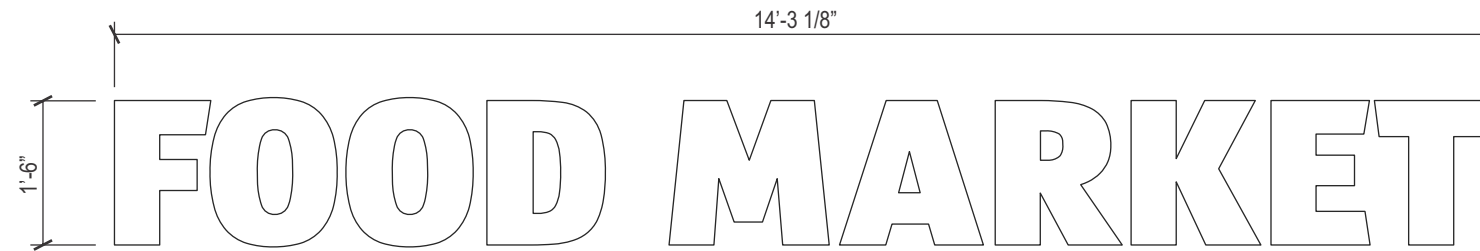
Sales Rep:
Mark C.

Date: 09-21-15 Drawn by: Mike M.

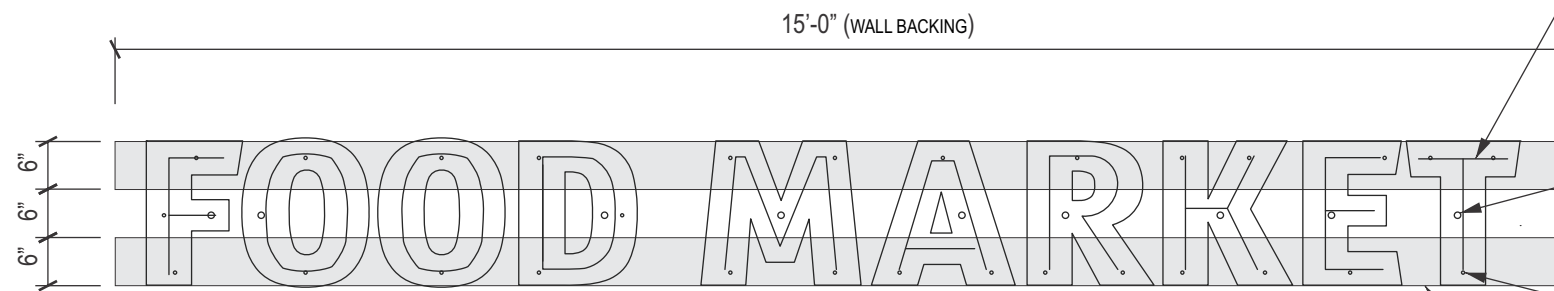
1	02-10-16	MM
2	06-01-16	MM
3		
4		
5		
6		

Electrical Requirement:

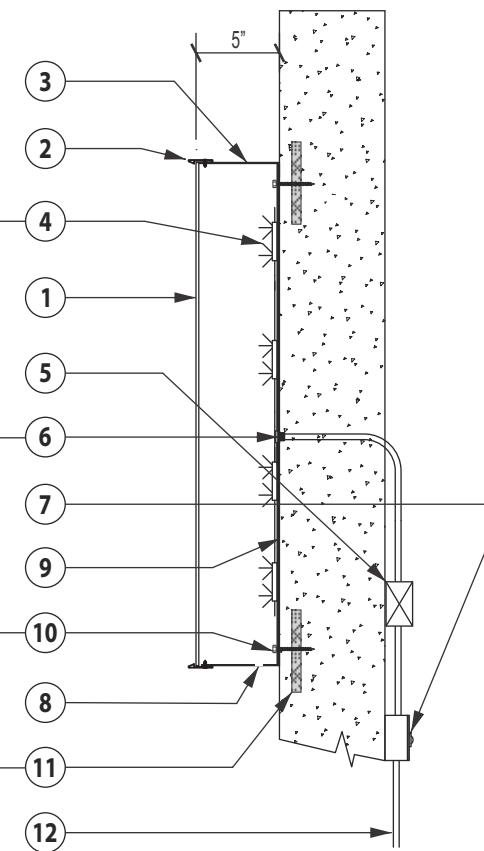
120 Volts 277 Volts



SIGN - C.1 NEW FABRICATED ILLUMINATED WALL CHANNEL LETTERS (QTY.-1)
SIGN - C.2 Scale: 1/2" = 1'-0"



CHANNEL LETTER ELECTRICAL & BACKING LAYOUT
Scale: 1/2" = 1'-0"



LETTER SECTION VIEW
Scale: NTS

ALDI CORPORATE COLOR SCHEME

DIGITAL PRINT COLOR MATCHING



MATERIAL LIST		
ITEM	QTY	DESCRIPTION
1		0.1875" #7328 WHITE PLEX FACE
2		TRIM CAP FINISH TO MATCH SLATE GRAY
3		0.063" ALUM. RETURN FINISH TO MATCH SLATE GRAY
4		WHITE LED MODULES
5		60W LED POWER SUPPLY
6		3/8"Ø ELECTRICAL CONDUIT THRU WALL
7		STD. STYLE DISCONNECT SWITCH
8		DRAIN HOLES
9		0.080" ALUM. LETTER BACK
10		1/4"Ø BY 3" SELF DRILLING BOLTS INTO WALL BACKING, MIN.- 2 / MAX.-5 PER LETTER
11		1/2" THICK BY 6" HIGH PLYWOOD WALL BACKING BY OTHERS
12		120VOLT @ 10AMPS SINGLE CIRCUIT PRIMARY ELECTRICAL POWER BY OTHERS

ELECTRICAL SPECS		
ITEM	QTY	DESCRIPTION
1		MODULAR 60 POWER SUPPLY @ 1 AMPS
2		SLOAN CL5



THIS SIGN IS INTENDED TO BE INSTALLED IN ACCORDANCE WITH THE REQUIREMENTS OF ARTICLE 600 OF NEC AND/OR OTHER APPLICABLE LOCAL CODES. THIS INCLUDES PROPER GROUNDING AND BONDING OF THE SIGN



2101 Carrillo Privado, Ontario, CA 91761
(909) 930-0303 Fax: (909) 930-0308
E-mail: design@signindustries.tv
Web: www.signindustries.tv

All ideas, plans or arrangements indicated on this drawing are copyrighted and owned by Sign Industries Incorporated and shall not be reproduced, used by or disclosed to any persons, firm or corporation for any purpose whatsoever without written permission of Sign Industries Incorporated.

Drawing No

15-353



Page: **7**

Project:



FOOD MARKET

La Habra - CA

Location:
Imperial Hwy. & S. Harbor Blvd.
La Habra, CA 90631

Client Approval:

Date of Approval:

Sales Rep:
Mark C.

Date: 09-21-15 Drawn by: Mike M.

1	02-10-16	MM
2	06-01-16	MM
3		
4		
5		
6		

Electrical Requirement:

120 Volts 277 Volts



PANORAMIC VIEW FROM IMPERIAL HWY. OF EXISTING SITE CONDITIONS

Scale: NTS



2101 Carrillo Privado, Ontario, CA 91761
(909) 930-0303 Fax: (909) 930-0308
E-mail: design@signindustries.tv
Web: www.signindustries.tv

All ideas, plans or arrangements indicated on this drawing are copyrighted and owned by Sign Industries Incorporated and shall not be reproduced, used by or disclosed to any persons, firm or corporation for any purpose whatsoever without written permission of Sign Industries Incorporated.

Drawing No

15-353



Page: **8**